







Contents

- 6 Designers
- 14 Aluminium
- 19 Synthetic
- 24 Weaving
- 26 Wood
- 30 Rope

Products

- 10 70
- 16 Aero
- 20 Alisee
- 22 Ashdown
- 24 Batik
- 26 Birillo
- 28 Breake
- 30 Brooklyn
- 90 Cane Be
- 92 Caregon
- 98 Caroline
- 102 Cooper
- 106 Elisee
- 106 Emely
- 120 Etherea
- 124 Fes
- 128 Flip
- 132 Flora
- 140 Florian
- 148 Foglia
- 152 Gemma
- 156 Gigliola
- 162 Ginevra



- 166 Giorgia
- 168 Grace
- 172 Hercules



- 180 Heron
- 190 Iza
- 200 Iris
- 202 Kal
- 204 Karon
- 208 Kiki
- 212 Kisa
- 218 Kys
- 260 Lea
- 268 Lem
- 272 Lilia
- 276 Linea
- 280 Lodz
- 284 Malawi
- 288 Manhattan
- 290 Manila
- 294 Merlyn
- 298 Miami
- 302 Micaela
- 304 Milly
- 308 Moires
- 312 Ocean
- 318 Orizont
- 324 Palinuro
- 328 Papillon
- 336 Raissa
- 340 Renato
- 344 Riff

- 348 Rio
- 352 Riviera



- 360 Rustic
- 368 Sauvage
- 370 Serres
- 376 Sirio
- 400 Sofia
- 420 Stella
- 440 Stylo
- 448 Tappo



- 452 The Art of Swingin'
- 458 Titan
- 464 Toliman
- 470 Tondo
- 476 Tosca
- 480 Tropea
- 484 Ubud
- 452 Valentina
- 460 Viareggio
- 464 Vienna
- 472 Vintage
- 482 Vovo
- 494 Westly
- 500 X
- 510 Y
- 516 Zagora
- 520 Zoco
- 530 Zoe

Carlo Basso

Carlo Basso is the founder and creative director of cbdesign. His design pieces have appeared worldwide spanning more than twenty years of practice. Basso's design focuses on sheltering and enhancing comfort with style. His line of outdoor furniture combines retro and vintage with a modern twist that reaches mid-end and high-end retailers and direct customers.

The heart of cbdesign lies within the hands and minds of its designers. With Basso as head, our outdoor furniture pieces are carved alongside a stellar team of innovative and inspirational designers of both Italian and Indonesian origins. Each design piece expresses classic contemporary design that gives accent to your spaces.



Awards

American Society of Furniture Designers (ASFD)
Pinnacle Award 2014
Summer/Casual Category
Foglia Chair for David Francis Furniture,
manufactured by Tanjaya
Winner

American Society of Furniture Designers (ASFD)
Pinnacle Award 2015
Dining/Casual Category
Miyako Dining Chair for Tanjaya
Finalist

Maurizio Priolo



Maurizio Priolo earned his bachelor's degree in Architecture and Interior Design from the Valle Giulia Faculty of Architecture, Sapienza – University of Rome, Italy. He received his master's degree in Architecture in 2013 and became a certified professional architect. Since 2008, Priolo has played important roles in charge of artistic direction, planning and production of national trade show events as well as roles that focus on concept development and commercial space design and fitting. He provides public and private exterior consultation and design service for a specialist manufacturer of outdoor products. Since 2016, he has been collaborating with an international outdoor furniture manufacturer, managing prototyping and manufacturing of certain collection pieces.

Award

Spreach Agorà Design 2018
With Francesca Pitisci
Second place

Francesca Pitisci

Francesca Pitisci graduated in 2008 with a Degree in Architecture and Interior Design from the Valle Giulia Faculty of Architecture, Sapienza – University of Rome, Italy. She received his master's degree in Architecture in 2013 and became a certified professional architect. In 2015, she gained further insight into sustainability issues while studying at undergraduate level and took a LUMSA Master's Degree in CasaClima® Sustainable Architecture. She then joined the executive management of Fondazione Italiana Bioarchitettura (Italian Sustainable Architecture Foundation). Since 2016, she has been collaborating with an international outdoor furniture manufacturer, managing prototyping and manufacturing of certain collection pieces. She is a collaborator with the ULA Architects Design Group, based in Rome, Italy.

Award

Spreach Agorà Design 2018
With Maurizio Priolo
Second place



Oriol Llahona

Oriol Llahona was born in 1977 in Barcelona, Spain and studied Design in Elisava there as well as in Universität GH Essen, Germany and in the Southampton University in the UK. Llahona has earned various valuable experiences working in companies and design studios in Europe. In 2006, he created the brand **llahona.**, that represents his cosmopolitan and contemporary edge underpinning his design tastes. Llahona's ideal designs centre on the essentials of life and the human emotion exhibited with elegance and a hint of surprise here and there. Llahona currently works for multiple renown design companies in Europe, Asia and America.



Bayu Edward

Bayu Edward has been active in his career as a product designer since 2010. Along with his design and production company called **Asanka Studio**, Bayu has developed a portfolio of work with varying scales of industries and provided them with his perspective on good design principles. In relation to his studio practice, Bayu initiated an art design gallery also based in Bandung, Indonesia, where he often exhibits his design collection.

Stefania Battiston

Stefania Battiston graduated from the Faculty of Architecture in Venice, Italy and has had experiences in product design and art direction ever since. An acute interpreter of contemporary taste and trend, Battiston constantly offers the team a fresh take on every design iteration. In 2006, Battiston founded STEP, a dynamic and multifaceted industrial photography workshop that trains people and companies. Through the workshop, she makes use of solid knowledge in the cross-sectoral field of photography, styling, and design for the public.



Abie Abdillah

Abie Abdillah is an Indonesian emerging design talent. He is formally trained as an industrial designer and has had experiences in a furniture manufacturer and boutique design studio in Jakarta, Indonesia. With a keen passion to explore local materials such as rattan and teak wood, Abdillah has received recognition for his works through a number of awards and publications. Abdillah founded **studiohiji**, a design unit based in Tangerang, Indonesia.



Sugeng Untung

Sugeng Untung is an interior designer who is actively involved in the local interior development projects. One of his recent projects is the revitalization of I Gusti Ngurah Rai International Airport in Denpasar, Bali, Indonesia. In the last three years, Untung expanded his interest and expertise to product design. He especially turned his concentration towards furniture design through participating in several design competitions which earned him more than ten achievements. His love for design and art forms the basis of his effort in exploring the philosophical aspects of life to create valuable design pieces.

Aluminium



An integral part of the design

In 2011, cbdesign introduced epoxy powder finished aluminium frames which, combined with the synthetic spoke profile, reproduced the voluminous and natural wicker style of the seventies garden furniture. These retro-style collections with exposed frames become the distinctive signature of cbdesign. Over time, the techniques evolve towards profiles that stay prominent but are more subtle, that keep their strength unaltered but create modern and essential lines.

In addition to the spoke profile, the aluminium is combined with weaves which, depending on the process, create detailed textures and decorative motifs.

Color





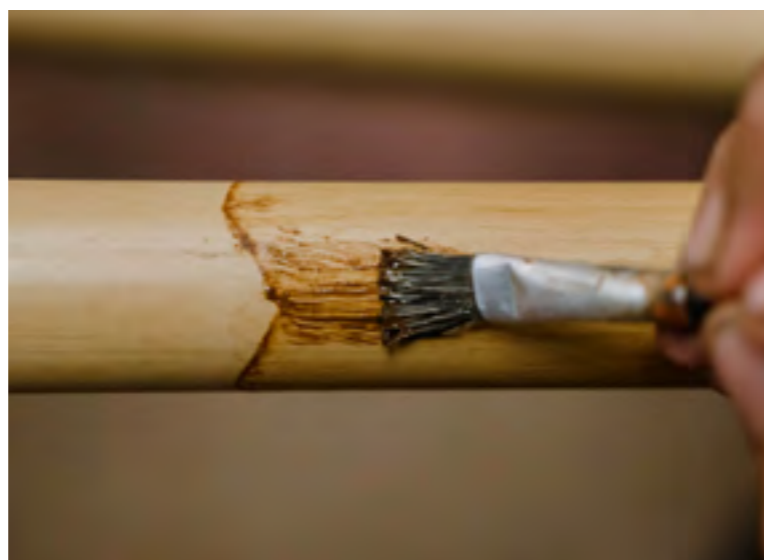
High resistance and greater customisation

The aluminium used by cbdesign is finished with epoxy powder, a very important treatment for aesthetic qualities but also for functionality, as it protects the metal itself from atmospheric agents, chlorine and salt water, ensuring the collections a long-lasting lifetime. One of the strengths of cbdesign is customisation, which lets customers choose and combine the colours for each individual component to create customised products: the 12 frame hues can be combined with the 12 synthetic fibre tints and the 12 shades of wrapping to create over 1.700 colour combinations.

Natural Texture

Special handmade process

The aluminium can be enhanced with an exclusive cbdesign process called Manao Texture: a complex process divided into several phases where our artisans paint details on the aluminium frames entirely by hand, reproducing the knots, veins and shades of natural rattan to create unique pieces that maintain their beauty unchanged over time.



Bubble



Black Brownies Grey Lizard Natural CL Sea Shell Ice White

Half-round Bubble



Black Brownies Grey Lizard Natural CL Sea Shell

Flat Bubble



Black Kubu Grey Grande Kubu Grey Natural CL Sea Shell Ice White

High
Quality,

Great

Resistance,

and
Sustainability



Synthetic

Pioneers of the synthetic spoke profile

cbdesign is one of the first outdoor furniture companies in the world to create an innovative form of synthetic that is still recognized from their products: the spoke profile. Born in 2011, this new synthetic profile becomes the starting point to reproduce the traditional natural cane furniture of the seventies: the 10 mm thick spokes are curved, closed together and fixed with clamps to the powder finished aluminium frame.



The results are collections with a retro flavour where the aluminium reminds of the bulkier cane and the synthetic of the thinner reeds. This technique has evolved over time, giving shape to modern and stylized collections: the profiles become uniform and thin, the composition of the elements becomes less conventional, the colours brighten up and multiply.



The synthetic is produced and worked by hand directly by cbdesign factories, to enhance the quality and refinement of the collections. Its main feature is the strong temperature resistance, ranging from -70°C to 80°C , ideal to create furnishing elements that must withstand extreme weather conditions. In addition, it is resistant to water corrosion from both seawater and pool water. cbdesign offers maximum customisation to best meet the needs of its customers: the 12 frame hues can be combined with the 12 synthetic fibre tints and the 12 shades of wrapping to create over 1.700 colour combinations.

Furthermore, cbdesign is very cautious on protecting the environment: the synthetic is eco-friendly, and its high quality allows it to remain stable and compact, without melting or wearing out over time.



Weaving

Weaving for traditional and modern weaves

In 2016 cbdesign revolutionises the synthetic weave: the Bubble collection is born, with a cane weft of variable thickness (11-14 mm) which faithfully reproduces the irregularities and shades of natural reed. The weave is no longer flat but three-dimensional, aimed at creating collections with generous proportions. Today, in line with the trends of outdoor design, cbdesign has developed a synthetic that simulates rope in composition and texture: the weave is anchored with a network of knots to the aluminium structure, evoking the elaborate tying of the cordage from sailing ships.

Weaving

Twisted rope
7 mm



Black

Brown Oak

Euro Ash

Off White

Forest Green

Twisted
4,8 mm



Black

Brown Oak

Euro Ash

Off White

Forest Green



The intertwined workings of cbdesign are made exclusively by hand from expert craftsmen with care and attention, enhancing the handmade character of the creations to become even more refined thanks to the countless combinations of colours that can create detailed textures and decorative motifs.

Wicker

2,2 mm



Ice White

3 mm



Black



Black Texture



Anthracite



Deep Amazon



Java Brown



Lurik



Pulut Doff



Se'el Lizard



Honey Streaky



Muscade



White Wash



Sea Shell



Ice White



Kubu Grey



Pantone Blue

5 mm



Black



Kubu Grey



Grey Finner



Brownies



Pulut



Beige



White Wash

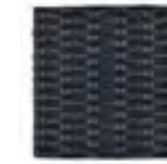
6 mm



Black



Black Arang



Anthracite



Savanne



Java Flat



Honey Streaky



Ivory



Muscade



White Wash Flat



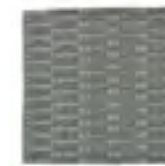
Sea Shell



Ice White



Kubu Grey



Grey Wash



Grey Lizard



Grey Fineer



Dark Blue



Blue



Pantone Blue



Turquoise



Croco



Se'el Lizard



Light Green



Mint



River Blue



Orange



Pantone Yellow



Yellow



Aubergine



Pink



Kubu Grey Half-round



Pulut Half-round



White Wash Half-round

Wood



Indonesian Legal Wood Certified

cbdesign uses Indonesian Legal Wood and FLEGT certified teak and exclusively of grade A, the highest quality available on the market. The wood comes from trees grown at least for 40 years in Indonesian plantations that are controlled, sustainable and rigorously managed with respect towards nature and its integrity for future generations. A very important aspect that demonstrates the environmental sensitivity of cbdesign and the responsible origin of the material.

In harmony with nature

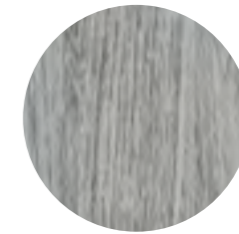
The high quality of the teak used by cbdesign guarantees the products considerable resistance to atmospheric agents, salt water and chlorine. The collections can be made entirely in teak or in combination with synthetic: they are perfect for embellishing outdoor spaces with originality and design, creating a deep and lasting harmony between nature and furniture.



Wood Grain



Natural



New Grey



Charcoal



Smoke White



White Wash



Black Woca

A living and precious material

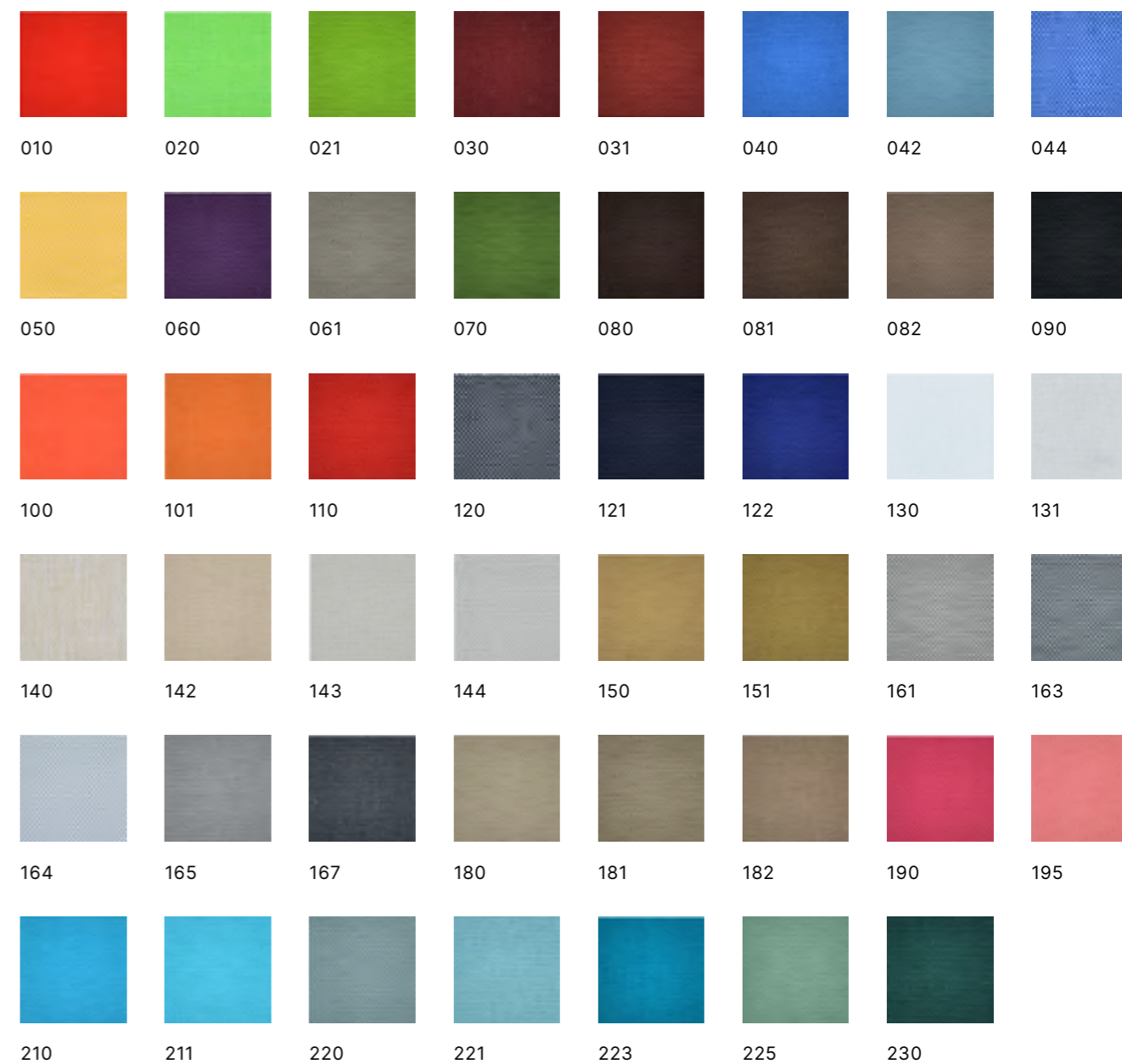
The teak wood of the cbdesign collections is characterised by a distinctive honey tone and smoothness to the touch. As it is a living material, over time it tends to take on a silvery tone due to the natural oxidation of the wood, which gives the surfaces a pleasant lived-in appearance, very trendy in the world of outdoor design. It is possible to bring back its initial golden colour by using specific products that revive its natural shades and transmit a greater sense of warmth.



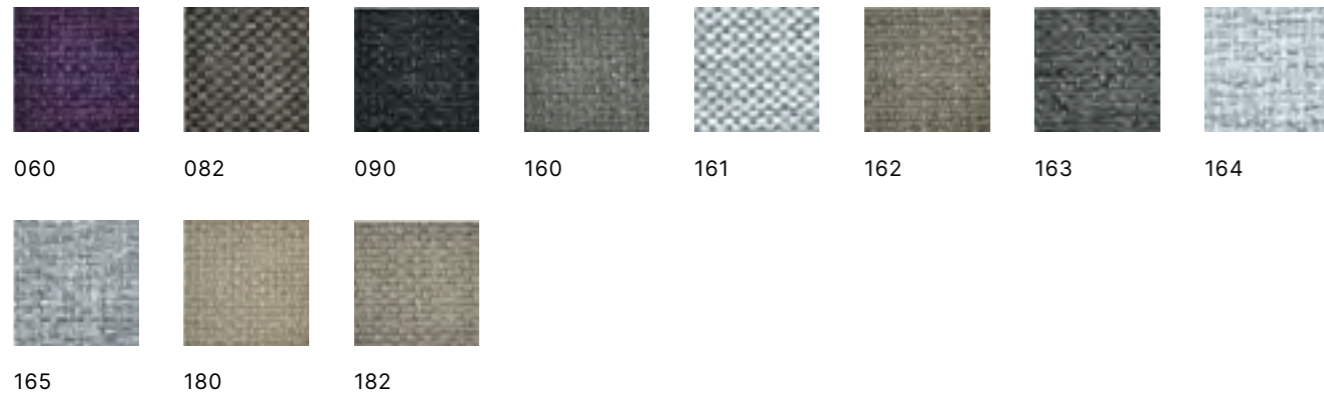
Fabric

Our cushions are designed to last over time. Their non-deformable foam core is covered with removable, water-repellent and stain-resistant OLEFIN fabric, available in a very wide range of colors that are resilient to harsh weather conditions.

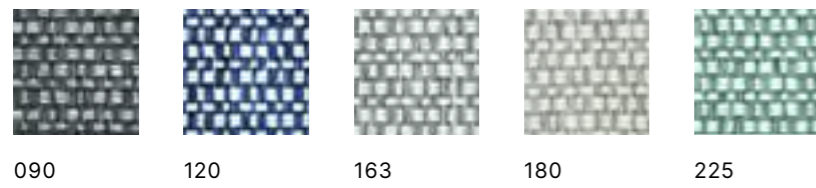
Cartenza



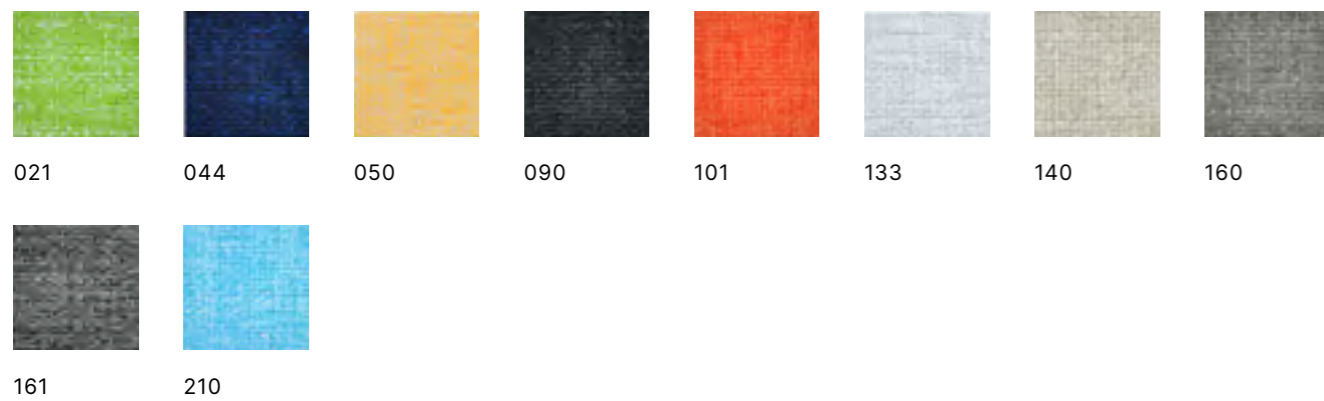
Copacobana



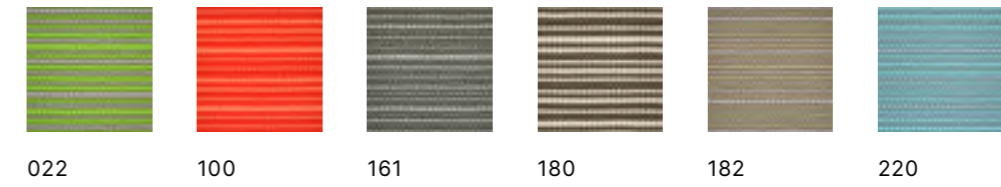
Fontelina



Gracebay



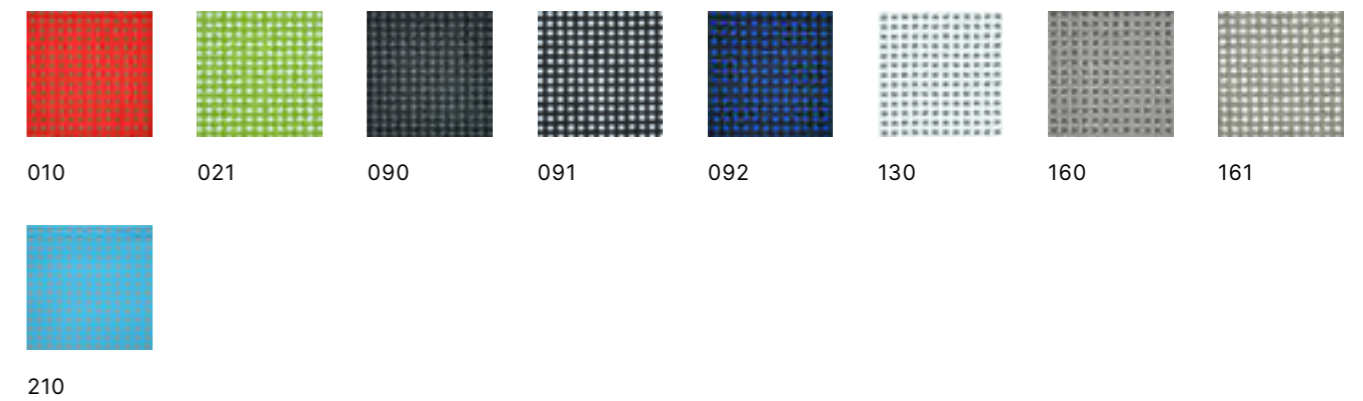
Palolem



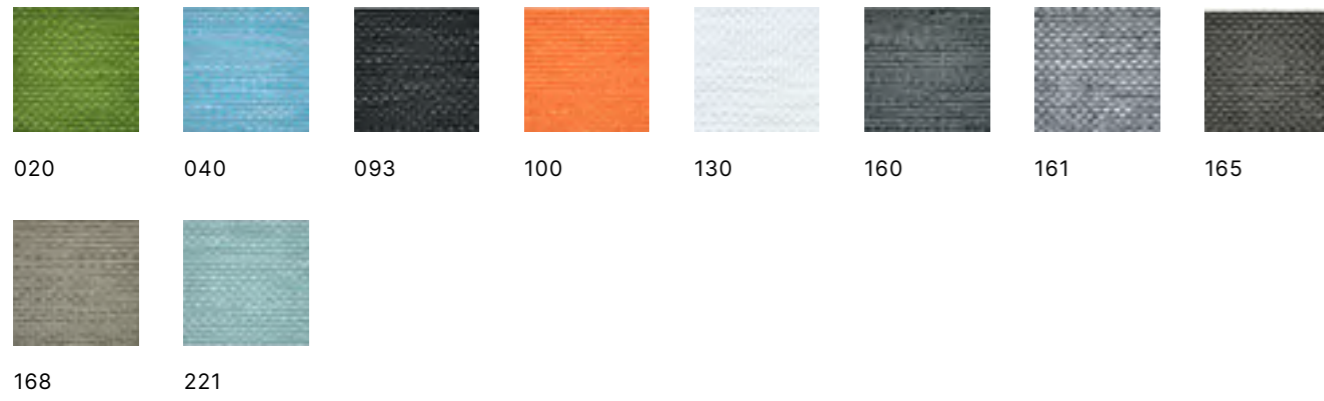
Pattern



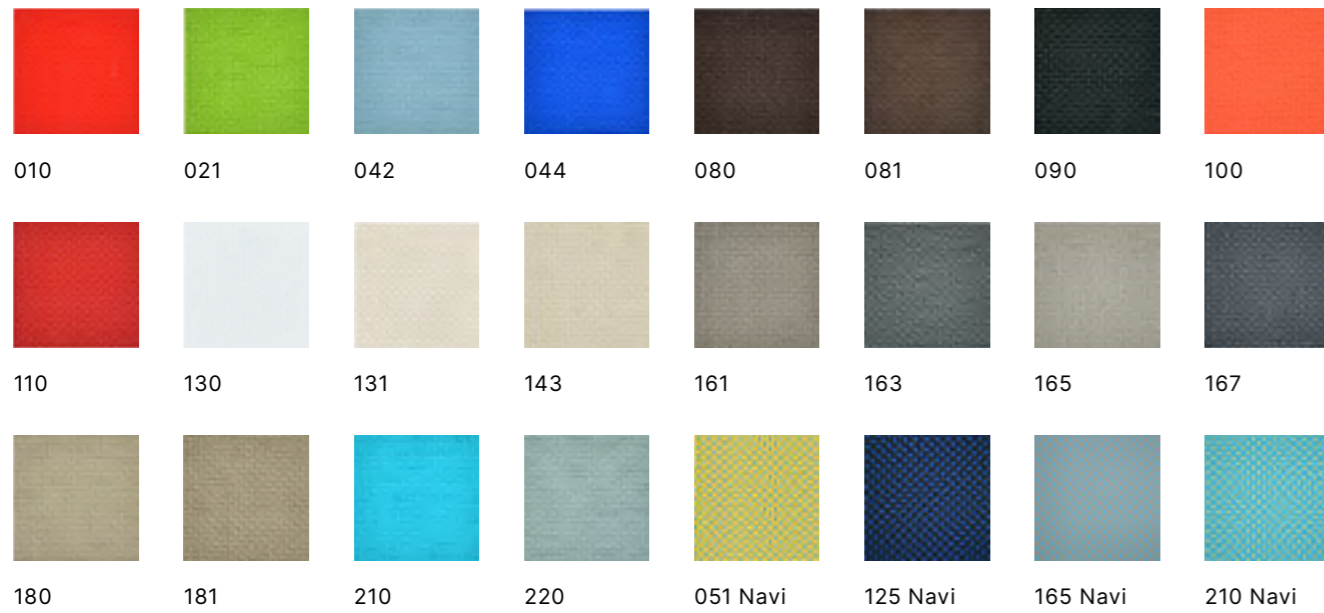
Praia



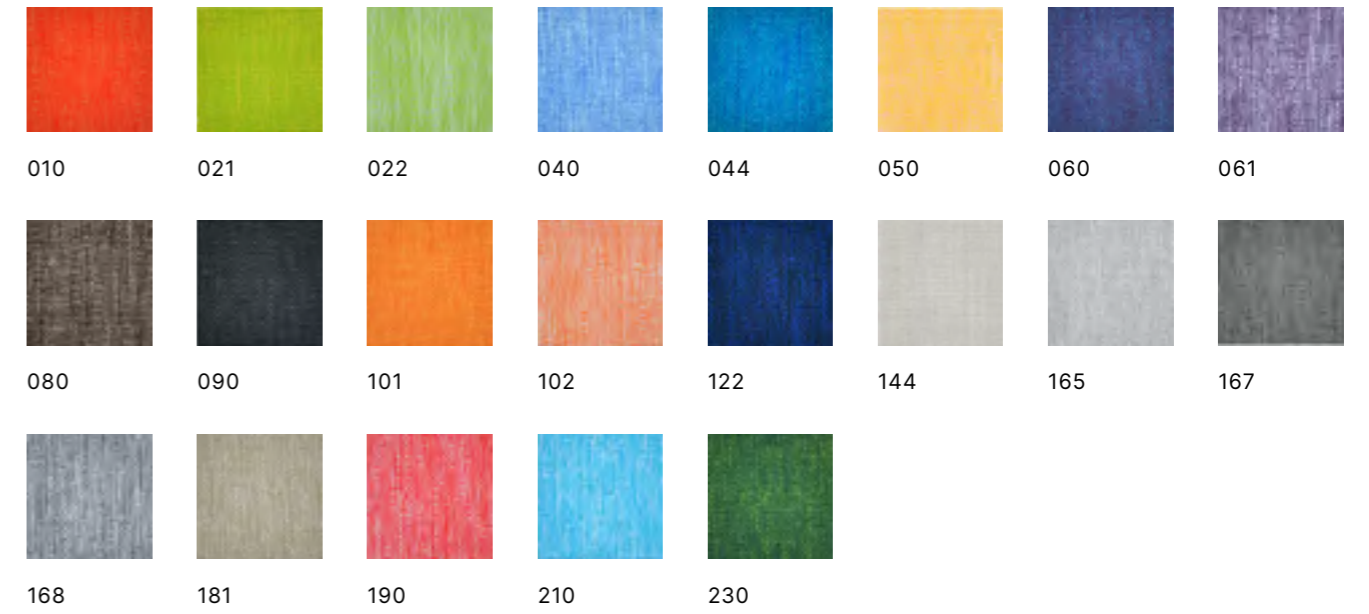
Southend



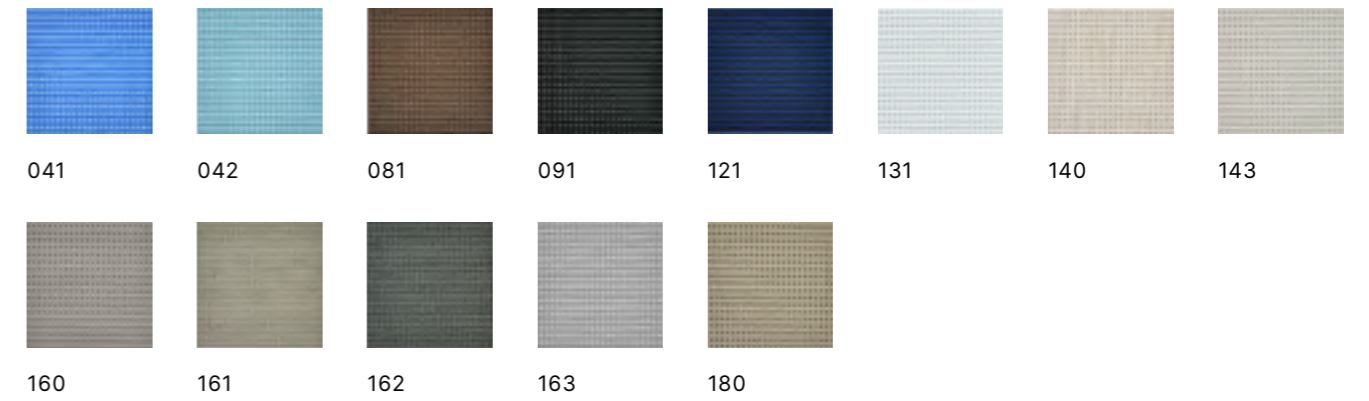
Stinson



Venao



Wifera



Rope

A synthetic material for natural effects

cbdesign uses sunproof rope on their furnishings and accessories. Made of synthetic material, it is very suitable for the outdoors because it does not absorb moisture and dries quickly. The colour has an excellent durability, the fibre is resistant to stains, moulds, abrasions and sunlight and moreover it is highly ecological and recyclable. The rope has a thin thickness of 5 mm and allows for solid weaves in substance and softness to the touch, ideal for furnishing projects where comfort and durability go hand in hand.



70's



Sculptural inspirations meet the beauty of natural materials.



70's is a collection of coffee tables in teak wood and marble. The latter version is made up of two parts featuring different heights, each of which can be used by itself or with the other to create a dynamic, visually-light coffee table.



Coffee Table

Oval (set of 2)

Marble
W120 / D80 / H37/32 cm



JF0030M
Natural

Rectangular

Recycled teak
W150 / D85 / H35 cm



JF0028
Natural



JF0028B
Black

Aero





Aero is a collection of teak tables whose round shapes create a pleasant visual harmony. The top is embellished with a slatted motif, which evokes the petals of a flower, and the cross legs meet and unite in the center of the design. Available in four sizes, Aero is ideal for all occasions and for all spaces.



Table

90
Teak
ø90 / H74 cm



TJ 0834
Natural

100
Teak
ø100 / H74 cm



TJ 084
Natural

130
Teak
ø130 / H74 cm



TJ 080
Natural

150
Teak
ø150 / H74 cm



TJ 081
Natural

180
Teak
ø180 / H74 cm



TJ 082
Natural

Agadir

Agadir is a collection of lounge chairs uniquely characterised by its striking silhouette and intricate work of rattan weaving.

Micaela

Experience the epitome of luxurious relaxation with our stunning array of lounge chairs and tables, perfectly embodying the fusion of elegance and comfort.





Each item exudes an air of sophistication, meticulously embellished with elaborate design elements.





Raissa

Raissa embodies the knots, veins and shades of natural rattan faithfully reproduced by hand: this describes our Manao Texture finish in a nutshell.



Micaela Lounge Chair

Powder-coated aluminium frame, resin
W90 / D95 / H137 cm
SH47 cm



N012N2
Dove



N012N2
Kubu Grey

Raissa Deck Chair

Powder-coated aluminium frame, resin weaving
W91 / D74 / H140 cm
SH41,5 cm



N013N2
Dove



N013N2
Kubu Grey

Raissa Stool

Powder-coated aluminium frame, 6 mm synthetic
weaving (FOC)
ø51,5 / H47 cm



N014N2
Dove



N014N2
Kubu Grey

Alisee

The design of the Alisee chair is elegant and discreet, yet it doesn't go unnoticed.





Alisee is built out of teak legs with a smooth, honey-coloured finish that features hand woven synthetic fibre seating. It attracts your attention for its soft, curvy lines and for its craftsmanship.

Dining Armchair

Teak
W59 / D54 / H79 cm
SH45 cm



TJ 150
Black

Altea



Aluminium, rope and teak wood: the Altea chair is made from choice materials treated to last.





Dining Armchair (Full Weaving)

Aluminium frame, 5 mm round anthracite rope, teak legs
W55 / D60 / H86 cm



K036A
Seashell



K036
Charcoal



Ashdown





Relax Chair

Teak
W68 / D95 / H98 cm



TJ 102
Natural

A folding chair designed to deliver the ultimate in relaxation, Ashdown is made of natural teak wood in a characteristic slatted style that lets the air and the sunlight filter gently through it.

Brooklyn

The Brooklyn chair is covered with various colourants as well as natural, rattan-coloured, synthetic fibre.



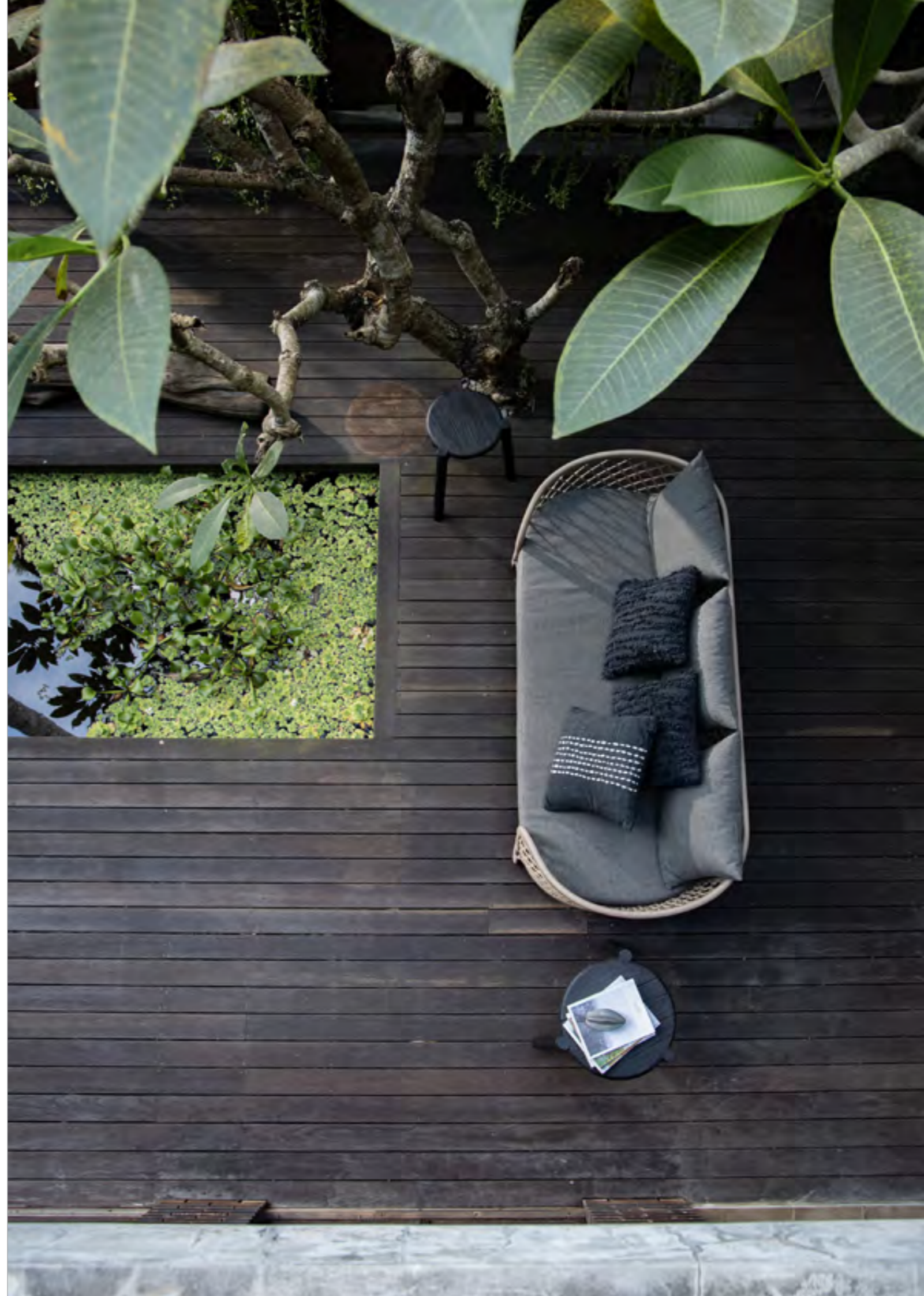


Synthetic fibres are ideal for furniture that has to withstand hot and cold weather. It also perfectly withstands the corrosive action of fresh and saltwater.





Natural rattan-coloured finish



Indulge in
relaxation



Moments of sharing: warm relationships start and grow at the table

Many things can take place around a table: you can have lunch, dinner or just sip a cocktail. In other words, you can enjoy moments with others or just by yourself.

These are situations in which you can perceive the warmth of your relationships, talking about lots of different things, in perfect harmony. Or you can come to realise how good it is to spend some time by yourself.



Round Sofa

Powder-coated aluminium frame, synthetic rattan weaving
W202 / D92 / H72 / SH30 cm



N389N1
Black



N389N1
Dove



N389N1
Mochaccino



N389N1
White



N389N2
Red

Dining Armchair

Powder-coated aluminium frame, synthetic rattan weaving
W56 / D65 / H79 / SH30 cm
SH46 / AH63 / SW48,5 - SD48,5 cm



N392N1
Natural



N392N1
Black



Cane-Be



Cane-Be — a light and airy collection designed for outdoor comfort and composed of an armchair and a sofa — is inspired by nature.



Manao cane veins and knots — a typical south-east Asian variety of cane — have been hand-painted on its frame. Soft foam rubber cushions with removable fabric covers complete the collection.



Lounge Chair

Powder-coated aluminium frame with Manao textured knots, natural coloured weaving
 W79 / D76 / H70,5 / SH32 cm



N060N2
 Rattan
 Stinson / Copacobana cushion

Sofa

Powder-coated aluminium frame with Manao textured knots, natural coloured weaving
 W159 / D78 / H70,5 / SH32 cm



N061N2
 Rattan
 Stinson / Copacobana cushion



Caregon

Featuring minimalism and comfort, Caregon pairs the angled lines of its frame with curved armrests. The foam rubber cushions make for an inviting seat, which is just perfect paired with a table for al fresco lunching or dining.





Dining Armchair

Powder-coated aluminium frame, resin bindings
W56 / D55 / H74
SH43 / AH75 cm



N444N1
Savanna

Caroline, a stool in natural teak boasting a classic yet contemporary design, features a vintage style reminiscent of faraway places. It stands out for its soft lines that begin at the legs and extend to the back in Vienna straw.

Caroline



Bar Stool

TJ 465A

Teak
SH61 cm
Natural



Cooper



The Cooper collection is made of aluminium and synthetic rope woven by hand. The cushions make the seats really soft, enjoyable in a moment of pure relaxation.

True luxury nowadays is
finding a place where you can
reconnect with yourself





Aluminium is an integral part of the design

Deep Lounge Chair

Synthetic aluminium frame, twisted rope weaving
 W80 / D85 / H64,5 cm
 SH31 / AH63,5 / SW60 / SD66,5 cm



N480N2
 Black, Euro Ash

Sofa

Synthetic aluminium frame, twisted rope weaving
 W160 / D85 / H64,5 cm
 SH31 / AH63,5 / SW60 / SD66,5 cm



N481C3
 Black, Euro Ash

Deep 3-Seater Sofa

Synthetic aluminium frame, twisted rope weaving
 W200 / D107 / H64,5 cm
 SH31 / AH63,5 / SW60 / SD66,5 cm



N481N3
 Black, Euro Ash



Ellisse



The geometric shape of the ellipse meets the harmony of nature in the collection of outdoor seating called Ellisse (the Italian word for ellipse) composed of chairs and armchairs designed to serve various purposes outdoors, from mealtimes to enjoying relaxing, intimate conversations.

Designed by
Oriol Llahona



Each seat is completed by cushions and features a double line of synthetic spokes that wrap around the aluminium frame.



Dining Armchair

Powder-coated aluminium, resin
W62 / D55 / H79,5 cm
SH44 / AH79,5 cm



N875N1
Dove

Lounge Chair

Powder-coated aluminium, resin
W79 / D79 / H72 cm
SH29 cm



N876N1
Natural

Relax Chair

Powder-coated aluminium, resin
W81 / D68 / H148,5 cm
SH35 cm



N877N1
Dove



Emely



Sturdy and solid, just like a majestic tree that gets itself noticed in the forest.

The large top of the rectangular Emely table is supported by legs that cross to form the base.





Rectangular Table

Recycled teak
5 cm top, 10×10 cm full open slat legs
W300 / D110 / H77 cm



PO158
Natural

Its recycled teak wood frame lends a natural, clean-cut appearance to the table

Etherea

Outdoor furniture in its most classic version, including a magical weave and volumes designed for utmost comfort.





The Etherea collection includes a lounge chair, a sofa and a sun lounger that combine the sturdy aluminium frame covered with a rope weave with soft, non-deformable foam rubber cushions.







Lounge Chair

Aluminium PC frame, synthetic rope weaving
W105 / D105 / H67 cm



IW001N1
Dark Grey

Sofa

Aluminium PC frame, synthetic rope weaving
W222 / D105 / H67 cm



IW002N1
Dark Grey

Sunlounger

Aluminium PC frame, synthetic rope weaving
W215 / D92 / H35 cm



IW003N1
Dark Grey

The fibres used in the Fes collection can easily withstand the heat and light of the sun and are weatherproof as well.

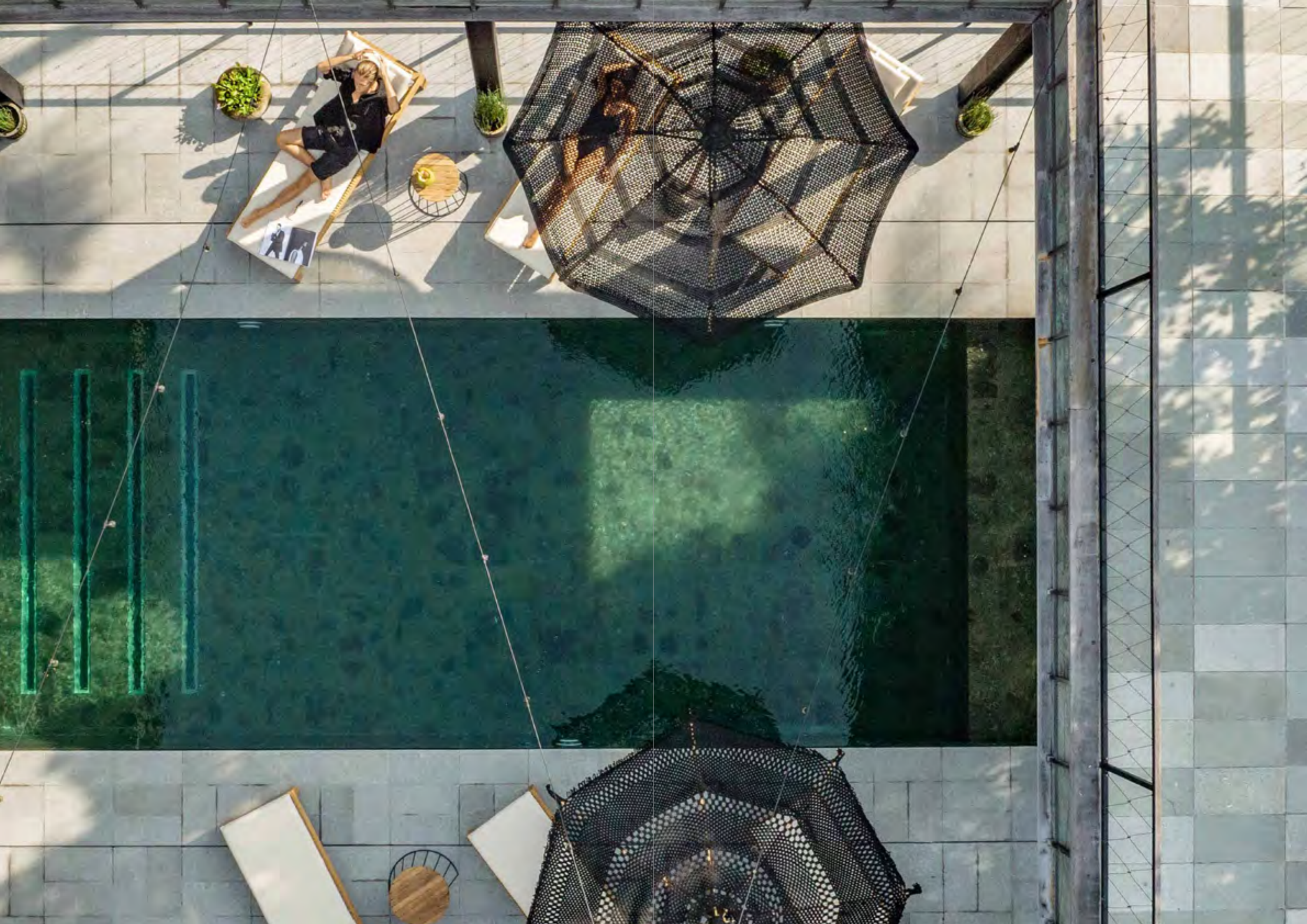


Fes



Hand-woven objects are
supple and strong







The macramé weave of the Fes Deck Chair comes from the villages of Java, an Indonesian island where this technique is still done by hand.



The Fes deck chair has a natural teak frame and a macramé woven seat. It is a strong and comfortable chair designed for enjoying moments of precious relaxation.

Umbrella Macramé

Teak, sunproof rope
ø300 cm



W4623
Black

Teak, sunproof rope
ø250 cm



W4624
Taupe

Umbrella Crochet

Teak, sunproof rope
ø300 cm



W22047
Black

Folding Luggage Stool

Teak, sunproof rope
W60 / D40 / H45 cm



W23039
Taupe



W23039
White

Flip

The dream of floating in the air that inspired the design of the historical cantilever chair becomes even more seductive in this outdoor version where the air is now transformed into a delicious summer breeze. A single iron frame forms the base and the seat is covered with woven cord.





Cantilever Chair

Powder-coated iron frame, synthetic rattan core weaving
W73 / D68 / H82 cm



IW025N1
Black, White





Flora

The Flora chair has distinctive, handmade traits balanced by its unique design.



Chair

Manao textured aluminium frame with knots, natural coloured weaving
W90 / D75 / H95 cm



N336N1
Manao

Synthetic rattan mingles in with
the aluminium frames finished
with natural Manao texture.



Florian

A collection that transports the living room into a different dimension and is ideal to create outdoor parlours.





The frame of the sofa and lounge chair is in aluminium covered with woven rope while the legs are made of teak wood for a natural touch.

A coffee table with a slatted top completes the collection.



Lounge Chair

Teak, synthetic rattan weaving
W78 / D76 / H78 cm



K075
Black

Sofa

Teak, synthetic rattan weaving
W78 / D168 / H78 cm



K076
Black

Coffee Table

Teak
W70 / D120 / H33 cm



K077
Natural





Designed by
Carlo Basso

Awards
Pinnacle Award 2015 (winner)



Foglia

Let yourself be lulled by Foglia,
a collection designed to blend
into one with nature.

The colours and the attention to detail and processing of materials, make Foglia the perfect seat for your moments of relaxation.



Lounge Chair

Powder-coated aluminium frame, synthetic rattan weaving
W120 / D104 / H151/34 cm



N120N1
Dove

Lounge Chair

Powder-coated aluminium frame, synthetic rattan weaving
W79 / D126 / H40 cm



N120N1
Dove





Gemma

Gemma boasts a captivating design with a synthetic rope wrap delicately enveloping its durable aluminum structure.



The chair is further enhanced by natural teak wood legs, offering a perfect balance of beauty and strength.



Everyday objects
made precious





Dining Armchair

Aluminium frame, 5 mm synthetic round rope, teak legs
W62 / D60 / H76 cm



K041
Green

Lounge Chair

Aluminium frame, 5 mm synthetic round rope, teak legs
W78 / D76 / H77 cm



K080
Green

Sofa

Aluminium frame, 5 mm synthetic round rope, teak legs
W78 / D168 / H77 cm



K081
Green

Gigliola





A compact, wraparound chair winks at the world of haute-couture fashion thanks to its open, flat rope weave in classic black and white reminiscent of houndstooth tweed.



The chair's natural teak legs add warmth to the design



Dining Armchair

Aluminium frame, 14 mm anthracite flat rope,
6 mm wicker, teak legs
W50 / D46 cm



K055
Two-Toned Taupe, Washed White





A lofty, refined name for a collection that shares its features.

Designed by
Oriol Llahona

Ginevra





The sofa and lounge chair feature rope twisted around an aluminium frame while the dining chair is also available in the version with hand-painted Manao cane veins.

Dining Armchair

Powder-coated aluminium frame, 7 mm twisted resin rope weaving
W60 / D59,5 / H79 cm
SH42 cm



N888N1
Black, Green

Powder-coated aluminium frame, twisted rope weaving
W60 / D59,5 / H79 cm
SH42 cm



N888N2
Raffia

Lounge Chair

Powder-coated aluminium frame, 7 mm twisted resin rope weaving
W79 / D75,5 / H67 cm
SH15 cm



N889N1
Forest Green

Sofa

Powder-coated aluminium frame, 7 mm twisted resin rope weaving
W219 / D78 / H67 cm
SH15 cm



N890N1
Forest Green



Giorgia



Designed by
Oriol Llahona

Giorgia is a collection of outdoor chairs featuring a woven rope seat and armrests reminiscent of raffia, a fibre used extensively for baskets. The armchair and the 3-seater sofa have a light and airy, handcrafted feel to them which is ideal for outdoor spaces.

Lounge Chair

Powder-coated aluminium frame, 7 mm twisted resin rope weaving
W80 / D77 / H67 cm
SH25 cm



N884N1
Raffia

Sofa

Powder-coated aluminium frame, 7 mm twisted resin rope weaving
W221 / D77 / H67 cm
SH25 cm



N885N1
Raffia



Grace



The Grace chair – available in two finishes, a light one and a darker one – celebrates moments of outdoor sharing.





Its aesthetic is characterised by an open cord weave covering the seat and the back while the lightweight frame is in aluminium.





Dining Armchair

Powder-coated aluminium frame, twisted rope weaving
W58 / D64 / H88,5 cm
SH45,5 / AH66 cm



N442N1
Black, Brown Oak

Low Back Dining Armchair

Powder-coated aluminium frame, twisted rope weaving
W58 / D62 / H82 cm
SH45,5 / AH65,5 cm



N442N2
Green Forest



N442N2
White



N442N2
Euro Ash

Hanging Lamp

To enjoy outdoor spaces even when it gets dark, we have designed some exotic-style lamps with a woven shade. The collection includes two floor lamps, one with an almost totem-like appearance and another with a hanging lampshade.



Hanging Lamp

Aluminium frame, 14-18 mm synthetic half round rattan
ø95 / H39/44 cm



N223N3
European Raffia

N223N3
Black

Standing Base for Hanging Lamp

Aluminium frame, 7 mm synthetic round core rattan
W65 / D140 / H275 cm



N224N3
Raffia



Hercules

As suggested by its mythological name, this is a solid and sturdy dining table.









It is available in two versions that differ in terms of featuring a natural teak or Travertine marble top. The large, solid wood legs are covered with natural rattan.

Designed by
Bayu Edward



Dining Table

Natural recycled teak
W240 / D100 / H77 cm



PO150
Natural

Natural recycled teak, Travertine marble top
W240 / D100 / H77 cm



PO150M
Grey



Heron

The perfection of the circle encounters the refinement of Carrara marble in this outdoor coffee table inspired by interior designs.







A solid recycled teak frame supports the top



Coffee Table

Recycled teak legs, marble top
ø110 / H35 cm



JF0037M
Carrara White

The Iza collection includes all the colours of the summer season and is designed to be used with the dining table.

Iza



An open weave mesh covers the seat and back with a synthetic twisted design in bright light blue, green, orange or red. The armrest's frame is in solid teak wood.





Dining Armchair

Teak, 4,8 mm synthetic twisted rattan weaving
W59 / D54 / H79/45 cm



TJ 150F1
Steel Blue



TJ 150F2
Green Brown



TJ 150F3
Orange



TJ 150F4
Red Brown



Iris



The frame of the Iris collection is in powder-coated aluminium.
The outside is in woven, top-quality synthetic fibre.





Lounge Chair

Powder-coated aluminium frame, 3 mm synthetic core rattan weaving
 W72 / D72 cm
 SH30,5 / SSW64 / SD70 cm



N475N1
Lurik

Sofa

Powder-coated aluminium frame, 3 mm synthetic core rattan weaving
 W198 / D72 cm
 SH30,5 / SSW64 / SD70 cm



N476N1
Lurik



Kal

As majestic as a sculpture, the crossed design of the teak wood frame is the distinguishing trait of the Kal collection.





The table has a rectangular Travertine marble top while the coffee table is available in two versions, one in Carrara marble and another in recycled teak with black legs.





Rectangular Dining Table

Natural recycled teak, marble top
W180 / D87 / H75 cm



JF018
Natural, Travertine

Natural recycled teak, marble top
W241 / D87 / H75 cm



JF019
Natural, Travertine

Coffee Table

Recycled teak, marble top
ø65 / H45 cm



JF021A
Natural, Carrara

Recycled teak
ø80 / H45 cm



JF021B
Black, Natural





Karon

230

cbdesign



Squeaky sand, a clear blue sky,
and crystal-clear water: the Karon
collection is inspired by the most
beautiful beach in Bali.





Made up of a dining armchair, a lounge chair, and two or three-seater sofas, it adds a touch of exotic comfort to outdoor spaces dedicated to conviviality, courtesy of an original diamond-shaped weave and of soft, comfortable cushions that make the seat a pleasure to use.





Dining Armchair

Aluminium frame, 7 mm synthetic hyacinth twisted rope
W66 / D66 / H75,5 cm



N071N1
Black



N071N1
Forest Green



N071N1
Off White



N071N1
Brown Oak

Lounge Chair

Aluminium frame, 7 mm synthetic hyacinth twisted rope
W80 / D81 / H72 cm
SH34 / AH69 / SW61 / SD61 cm



N073N1
Black



N073N1
Brown Oak



N073N1
Bronze



N073N1
Euro Ash

Sofa

Aluminium frame, 7 mm synthetic hyacinth twisted rope
W145 / D80 / H72 cm
SH34 / AH69 / SW61 / SD61 cm



N072N1
Brown Oak



N072N1
Black



N072N1
Euro Ash



N072N1
Forest Green



Designed by
Oriol Llahona



Its seat welcomes the user in a warm embrace.

Kiki



Kiki is an armchair distinguished by high, woven rope armrests. The cushion with its removable cover lends even more comfort to it.





Dining Armchair

Powder-coated aluminium frame, twisted rattan weaving
W55 / D55 / H76 cm
SH45,5 / AH73 cm



N449N1
Black



N449N1
Off White



Kisa

Designed by
Bayu Edward

Kisa is a collection of timeless styles, which includes an assortment of different chairs, for indoor and outdoor use.



The distinctive feature that makes each chair special is the aluminum structure, entirely hand-painted by skilled craftsmen who, through careful and delicate work, reproduce the natural shades of rattan. The chairs are unique pieces, made to furnish any space and to last over time.



Lounge Chair

Powder-coated aluminium frame, synthetic HDPE rattan weaving
W72 / D71 / H70,5 cm
SH42 / AH64 / SW54 / SD52 cm



N767N1
Rattan, Black

Natural rattan frame, synthetic HDPE rattan weaving
W72 / D71 / H70,5 cm
SH42 / AH64 / SW54 / SD52 cm



N767N2
Rattan, Black

Lounge Stool

Manao textured aluminium frame with knots, synthetic HDPE rattan weaving
W53 / D47 / H41 cm



N767N2
Rattan, Black

Kloster

Honouring tradition can also mean reinterpreting it in a contemporary key.





Table

Recycled teak with natural brushing
 (5 cm framed top, 1,5 cm middle slat)
 W300 / D105 / H 77 cm



P0117
 Natural

This holds true for the Kloster table: inspired by Indonesian culture, it pairs a thick top with traditionally-shaped legs made of recycled teak wood.



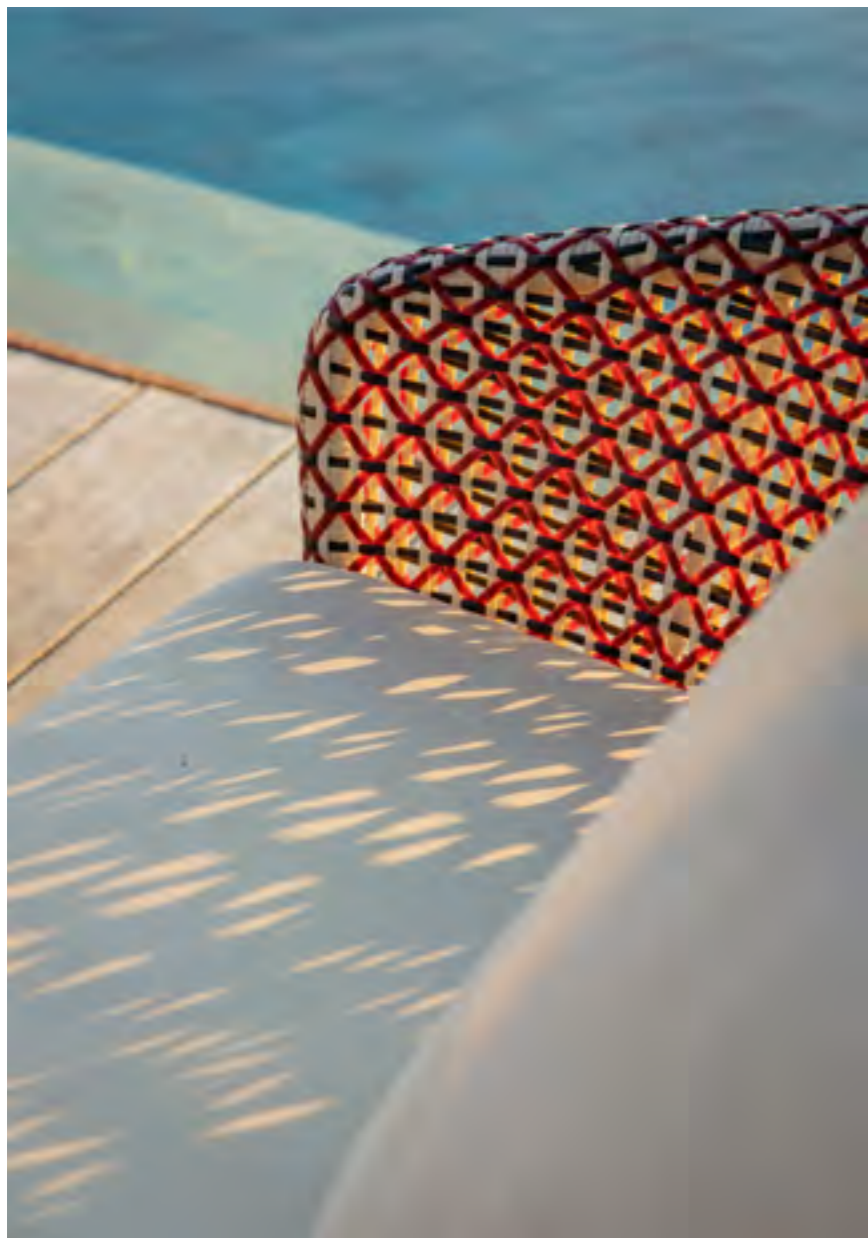
Lea

Designed by
Carlo Basso



The pleasure of a new encounter on a summer afternoon. This is what inspired the Lea collection in which an armchair, a lounge chair and a sofa offer comfortable seating well above ground level.





The frame that supports the seats and wraps around them is in aluminium covered with open-weave synthetic fibre with a Morocco finish.



Armchair

Powder-coated aluminium frame, synthetic peel weaving
W72 / D65 / H85 cm



IW010N1
Morocco

Lounge Chair

Powder-coated aluminium frame, synthetic peel weaving
W89 / D83 / H80 cm



IW011N1
Morocco

Sofa

Powder-coated aluminium frame, synthetic peel weaving
W223 / D83 / H80 cm



IW012N1
Morocco

Lem

Lem is a collection of side tables inspired by the iconic shape of the stool with a round top and three legs.



The side tables are available in three different sizes and two finishes, in natural or black teak wood.



Side Table

Recycled teak
ø35 / H55 cm



JF0009A
Natural



JF0009AB
Black

Recycled teak
ø45 / H60 cm



JF0009B
Natural



JF0009BB
Black

Recycled teak
ø55 / H65 cm



JF0009C
Natural



JF0009CB
Black



Lilia



The Lilia collection has a Manao Texture finish. Exclusive to cbdesign, the finish is a hand-painted aluminium that reproduces the details of rattan wickerwork.

The weaves are made of synthetic fibre and each knot is carefully made by hand.



Lounge Chair

Powder-coated aluminium frame, resin weaving, spoke, and binding
W83 / D72 / H81 cm
SH38 cm



N404N1
Black

N404N1
Black-Natural

N404N1
Dove

N404N2
Rattan Texture

Sofa

Powder-coated aluminium, resin weaving, spoke, and binding
W145 / D75 / H83 cm



N405N1
Black

N405N1
Black-Natural

N405N1
Dove



Linea





A primordial shape such as a simple, curved line drawn on a piece of paper defines the outline of this collection made up of a lounge chair and a 2-seater sofa that coax you into relaxation.

Lounge Chair

Aluminium frame, twisted rope weaving
W70 / D99 / H89 cm
SH35 cm



N730N1
Euro Ash

2-Seater Sofa

Aluminium frame, twisted rope weaving
W140 / D99 / H89 cm
SH35 cm



N731N1
Euro Ash



An aluminium frame supports the back and seat covered with strands of rope with a Euro Ash finish.

Lodz



Lodz, where aluminium and rope are the details that make the difference.





Everything is highlighted by different colours for cushions and seats, ideal for personalising spaces with style.

Dining Armchair

Synthetic aluminium frame, 4 mm twisted rope weaving
W58 / D61 / H78,5 cm
SH45 cm



N068N1
Black

N068N1
Leaf Green

N068N1
Brown Oak

N068N1
Euro Ash

Hanging Sofa

Powder-coated aluminium frame, synthetic rattan weaving
W178,5 / D89 / H45,5 cm



N070N2
Black, Brown Oak

Trolley

Aluminium frame, synthetic rattan weaving
W96 / D52 / H74,5 cm



N440N1
Black, Natural Teak

Sofa

Powder-coated aluminium frame, synthetic rattan weaving
W171 / D81 / H73 cm
SH31 / AH68 cm



N070N1
Black

N070N1
Leaf Green



Malawi

A collection featuring the splendours of Africa that embody all the exuberance of the extraordinary Malawian landscapes.

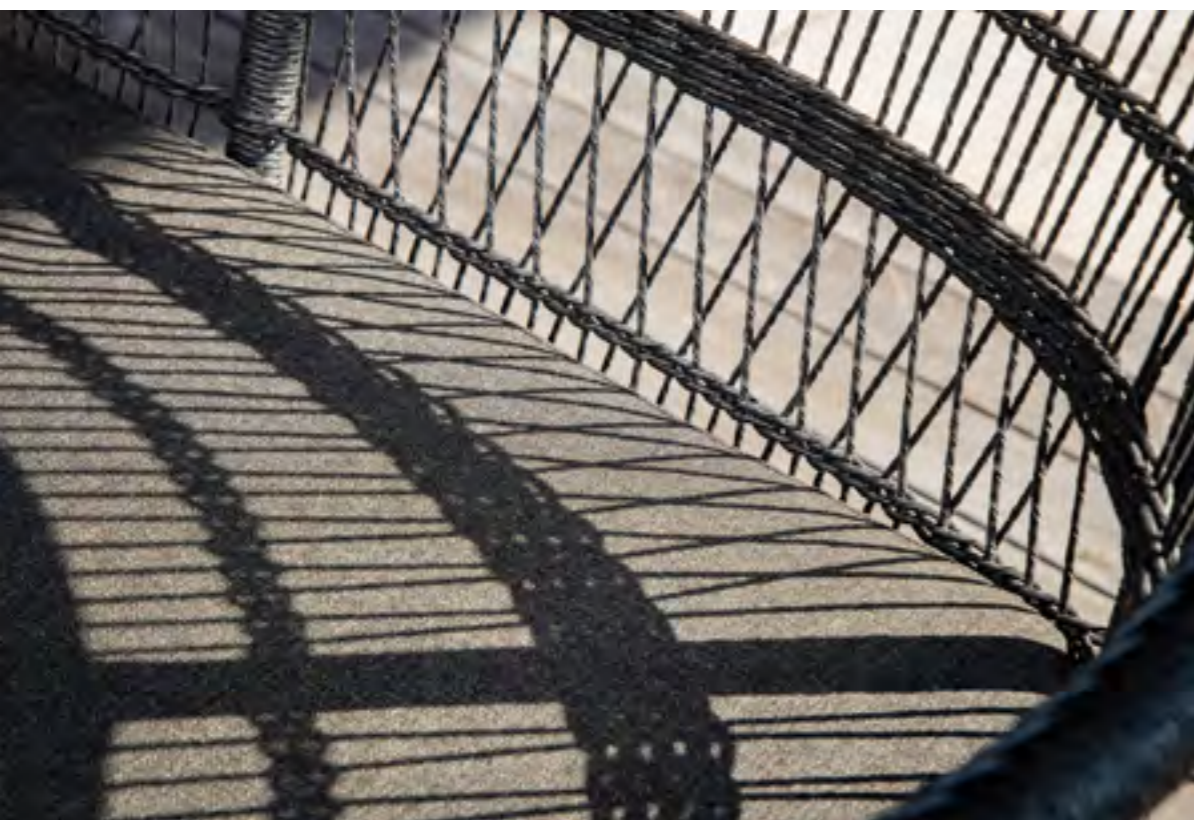




Lounge chairs and sofas are characterised by an elegant open weave finished with strands of rope in their natural colour or in flamboyant mint green, yellow and turquoise.



The cushions are in foam rubber with removable fabric covers.



Lounge Chair

Aluminium frame, 4,8 mm synthetic rattan weaving
W76 / D60 / H80 cm



FK001N1
Off White, Stinson Cushion



FK001N1
Euro ash, Gracebay Cushion



FK001N1
Euro Ash, Stinson Cushion



FK001N1
Brown Oak, Gracebay Cushion



FK001N1
Black, Stinson Cushion



FK001N1
Black, Black Cushion

Aluminium frame, 4,8 mm synthetic rattan weaving
W76 / D60 / H80 cm



FK001N2
Turquoise



FK001N2
Turquoise



FK001N2
Pink



FK001N2
Yellow

Sofa

Aluminium frame, 4,8 mm synthetic rattan weaving
W150 / D60 / H80 cm



FK002N1
Euro Ash



FK002N1
Euro Ash, Gracebay Cushion



FK002N1
Off White, Stinson Cushion



FK002N1
Brown Oak, Gracebay Cushion



FK002N1
Black, Black Cushion

Aluminium frame, 4,8 mm synthetic rattan weaving
W150 / D60 / H80 cm



FK002N2
Turquoise

Manhattan





Top-quality synthetic material meets aluminium painted with a *Manao Texture* finish. This combination creates a great aesthetic impact and a vintage style.



Lounge Chair

Powder-coated aluminium frame, resin bindings
W90 / D86 / H74
SH5 cm



N165N1
Dove



N165N1
White



N165N1
Grey

Sofa

Powder-coated aluminium frame, resin bindings
W193 / D86 / H74 cm
SH5 cm



N166N1
Dove



N166N1
White



N166N1
Grey



Manila

A sophisticated collection designed to create a coordinated and inviting outdoor living area.





The lounge chair and the sofa pair a natural teak seat with a rope back.

The former is also used for the large coffee table they are paired with.



Lounge Chair

Teak, synthetic rattan
W76 / D83 / H71 cm



K070
Black

Sofa

Teak, synthetic rattan
W205 / D83 / H71 cm



K071
Black

Coffee Table

Teak
W120 / D70 / H35 cm



K072
Natural



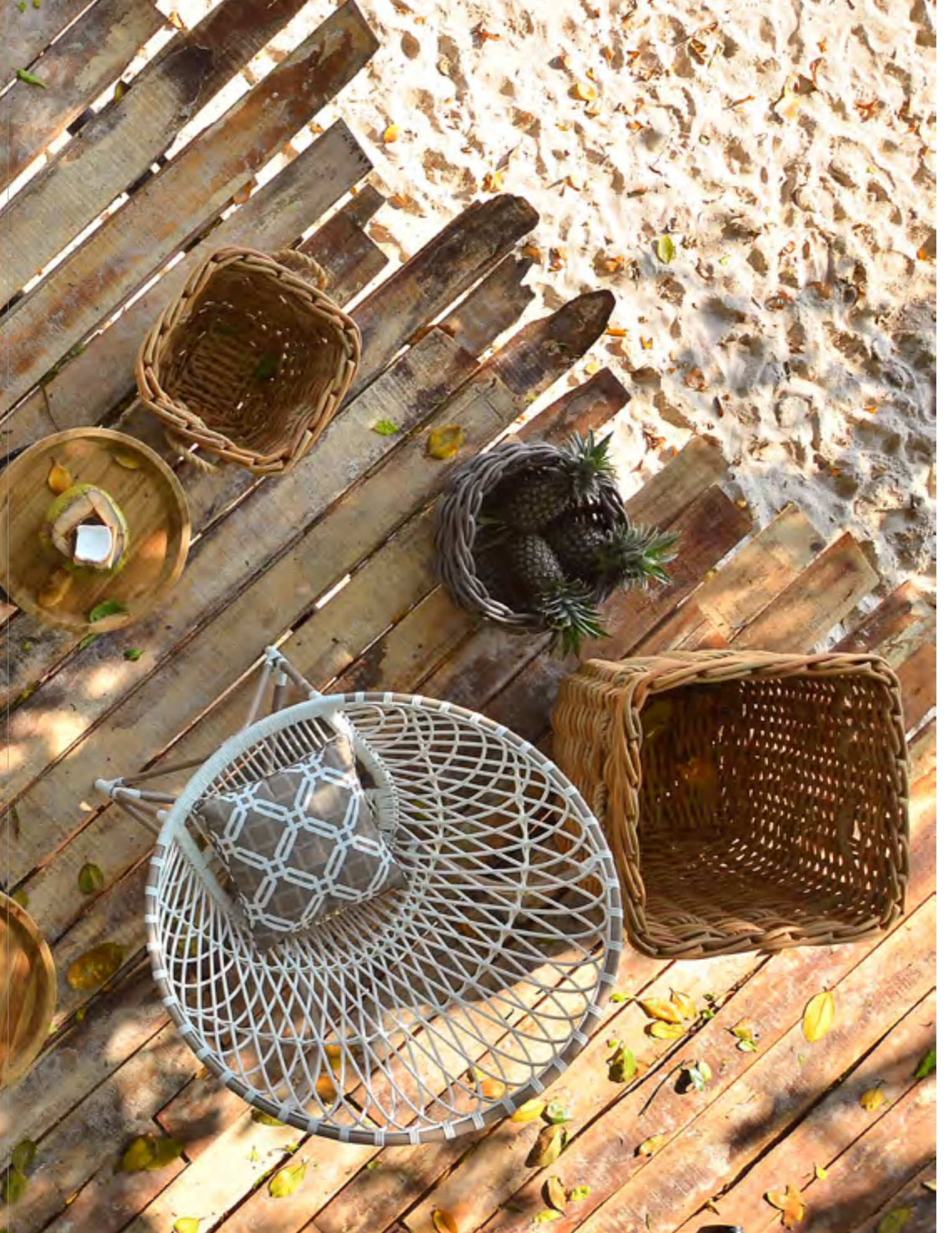
Merlyn



An exotic, modern touch: this is the promise of the Merlyn chairs in woven rope that reinterpret an iconic outdoor chair design.



The rope features an open, diamond-shaped weave – available in various colours – that ends at the seat.





Cross Chair

Powder-coated aluminium frame, synthetic twisted rope
W93 / D72 / H97,5 cm
SH43 cm



N058P1
White



N058N1
Natural



N058V1
Vivace



N058R1
Arcobaleno

Miami







A tribute to the Miami lifestyle, focused on relaxing at the poolside and chilling out on vast, white beaches with crystal-clear water, this collection includes beach

umbrellas in sunproof fabric available in various shapes with a teak wood pole, deck chair and director's chair paired with colourful, waterproof fabrics.







Umbrella

Teak, sunproof fabric
W250 / D250 cm



TJ 550B
Blue Stripes

TJ 550C
Brown Stripes

TJ 550D
Coral Stripes

TJ 550E
Sunrise Stripes

Teak, sunproof fabric
W200 / D200 cm



TJ 551B
Blue Stripes

TJ 552
Coblence

TJ 551D
Coral Stripes

TJ 551E
Sunrise Stripes

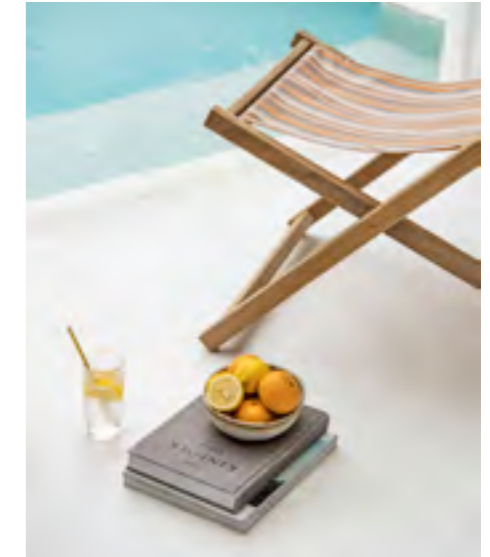
Deck Chair

Teak, sunproof fabric
W105 / D65 / H80 cm



TJ 277
Black

TJ 277B
Blue Stripes



TJ 277C
Brown Stripes



TJ 277D
Coral Stripes



TJ 550E
Sunrise Stripes

Director Chair

Teak, sunproof fabric
W58,8 / D49 / H85 cm
SH45 cm



TJ 449B
Blue Stripes

TJ 449C
Brown Stripes

TJ 449D
Coral Stripes

TJ 449E
Sunrise Stripes

Milly is a family of sofas and lounge chairs that can be used to easily imagine your ideal open-air living room.

Designed by
Carlo Basso



Milly



Each piece of furniture comes with a sturdy, teak wood frame to which sections of woven rope are added. The possibility of joining central modules to corner ones to create sofas in desired shapes and sizes is also of great interest.





Modular Sofa

Teak, synthetic rattan
W76/63 / D76/63 / H71 cm



TJ 315M1
Barcode Corner



TJ 316M1
Barcode Center



TJ 317M1
Barcode

Sofa

Teak, synthetic rattan
W160 / D63 / H71 cm



TJ 318M
Cross 2-Seater Sofa

Teak, synthetic rattan
W240 / D63 / H71 cm



TJ 319M1
Barcode 3-Seater Sofa

Moires

A collection of side tables in recycled teak wood available in three different sizes that look perfect next to the sofa.

Designed by
Carlo Basso





The legs are slightly conical and wider towards the base. There are two shelves, a top one and a bottom one.

Side Table

D35
Recycled teak
ø35 / H55 cm



JF0017A
Natural

D45
Recycled teak
ø45 / H60 cm



JF0017B
Natural

D55
Recycled teak
ø55 / H65 cm



JF0017C
Natural



Ocean



A dining chair with vintage lines that never go out of fashion, Ocean is made of natural-finished teak wood.

The seat and legs transmit a feeling of solidity while the open weave in moss green gives the back a visually light and comfortable appeal.



Dining Chair

Teak, belt
W50 / D54,5 / H130 cm



TJ 431
Natural, Muscade





Orizont

A natural teak frame and hand-woven synthetic cord make up the Orizont sun lounger.







Sunbed

Teak, full synthetic weaving
W200 / D65 / H17 cm



TJ 260C
Barcode



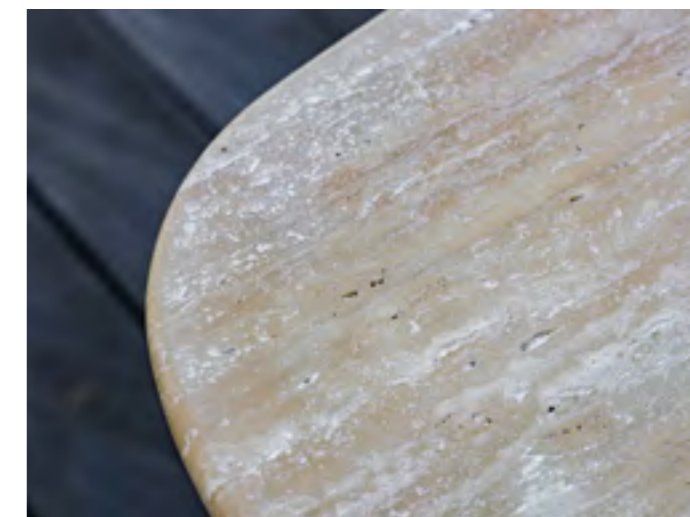
Palinuro

Palinuro is a collection of large outdoor tables.



The legs are in teak wood while the top is available in laminated teak, black marble or Travertino marble.

Designed by
Carlo Basso



Table

Marble top, powder-coated stainless aluminium legs
W282 / D100 / H75 cm



JIPA1SCAWH
Travertine, White-Natural Teak



Table

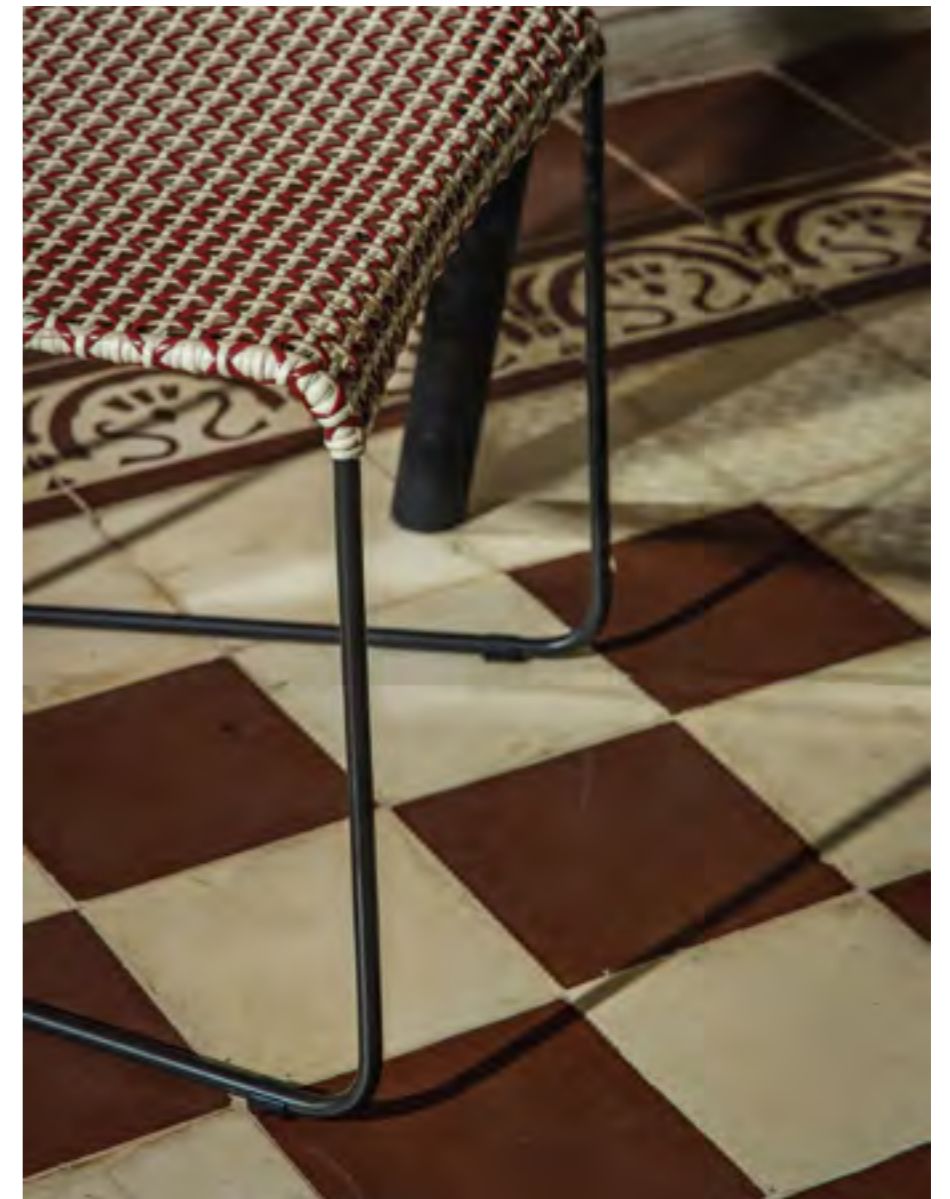
J1001L
Black, White-Natural Teak

Marble top, powder-coated stainless aluminium legs
W282 / D100 / H75 cm



Papillon

The warm weather carries a carefree feeling and good moods on its wings; with its slim aluminium frame and fun backrest, reminiscent of the most ironic male fashion accessory, Papillon is unsurpassable at promoting this frame of mind.





The cover is available in three bright colours and is obtained by interweaving synthetic fibres as if using Vienna straw.

Side Chair

Powder-coated iron frame, synthetic peel weaving
W51 / D68 / H88 cm



IW018N1
Black, Red



IW018N1
Black-Morocco



IW018N1
Black, White-Blue

Renato

Renato is a collection of designful counters, stools, poufs, and trolleys perfect for your outdoor bar.



Trolley

Aluminium frame, synthetic rattan weaving
W93 / D39 / H84 cm



N425N2
Natural Teak, Black



Aluminium, teak and hand-made synthetic fibre blend into a harmonious whole and a sought-after effect.



Riff

Riff is a square table in teak wood with a sturdy and minimal look.





The top is supported by four, tapered legs joined together by an X-shaped stretcher.

Table

Teak
W100 / D100 / H76 cm



TJ 198
Natural

Rio



370

cbdesign



A collection made up of lounge chair, sofa, and hanging chair for a stylish addition to any outdoor space.





Crafted with a unique design, these pieces feature rope-twisted synthetic material, carefully wrapped around an epoxy powder finished aluminium frame.



Lounge Chair

Aluminium frame, 7 mm synthetic twisted rattan rope
W82 / D79 / H67 cm
SH30 cm



N723N1
Euro Ash



N723N1
Forest

Hanging Sofa

Aluminium frame, 7 mm synthetic twisted rattan rope
W 177 / D82 / H44,5 cm



N725C3
Euro Ash

Sofa

Aluminium frame, 7 mm synthetic twisted rattan rope
W168 / D79 / H67 cm
SH30 cm



N724N1
Euro Ash



N724N1
Forest



Riviera

The sofa and armchair of the Riviera collection stand out for their original, curved, wraparound back that conveys a pleasantly inviting feeling of comfort which is enhanced by the seat cushions.









Lounge Chair

Teak, synthetic rattan weaving
W80 / D80 / H76 cm



TJ 403
Brown Oak

Sofa

Teak, synthetic rattan weaving
W140 / D82 / H76 cm



TJ 404
Brown Oak



The strength of natural wood is the main feature of Sauvage, a collection of tables, stools and accessories with primordial lines.

Sauvage





Tables, coffee tables and planters convey a hint of the industrial style while stools with woven rope seats are reminiscent of traditional craftsmanship.







Stool

Rope, teak
 ø28-30 / H42 cm



W4021
 Natural Teak



W4021M
 Black Ombre



W4021W
 White Wash Teak

Sunproof fabric, teak
 ø28-30 / H42 cm



W4022
 Natural Teak

W4022W
 White WashTeak



W4023
 Black Ombre

Teak
 ø28-30 / H42 cm

Rope, teak
 ø28-30 / H42 cm



W4025
 Natural Teak with Handle

W4025
 White Wash Teak
 with Handle

Stool with Back

Iron, rope, teak
 W56 / D45 / H91 cm



W4025B1
 Black, Teak Ombre

Iron, rope, teak
 W56 / D40 / H81 cm



W4025B2
 Black, Teak Ombre

Audio Table

Iron, recycled teak
 W120 / D40 / H76 cm



JF0045A
 Black, Natural

Iron, recycled teak
 W210 / D35 / H40/10 cm



JF0046A
 Black, Natural

Iron, recycled teak
 W210 / D35 / H40/15 cm



JF0046B
 Black, Natural

Coffee Table

Iron, recycled teak
 W130 / D40 / H35 cm



JF0047A
 Black, Natural

Iron, recycled teak
 W180 / D40 / H35 cm



JF0047B
 Black, Natural



Serres

A minimalist coffee table with clean lines, a round top and four legs that widen towards the base.

The Serres coffee table is made of teak wood with a black finish and looks just right in any context.

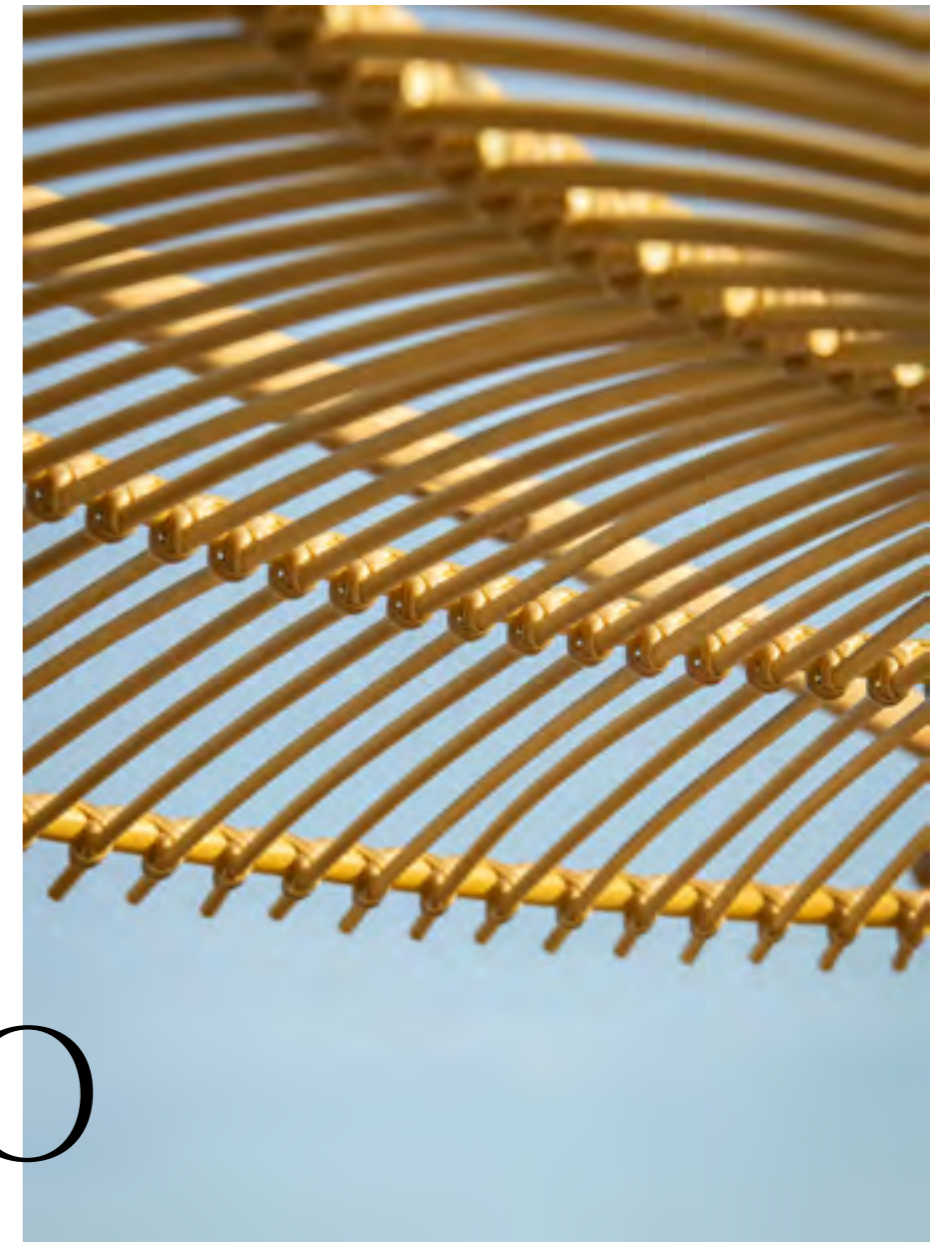
Coffee Table

Recycled teak
ø65 / H45 cm



JF0050B
Black



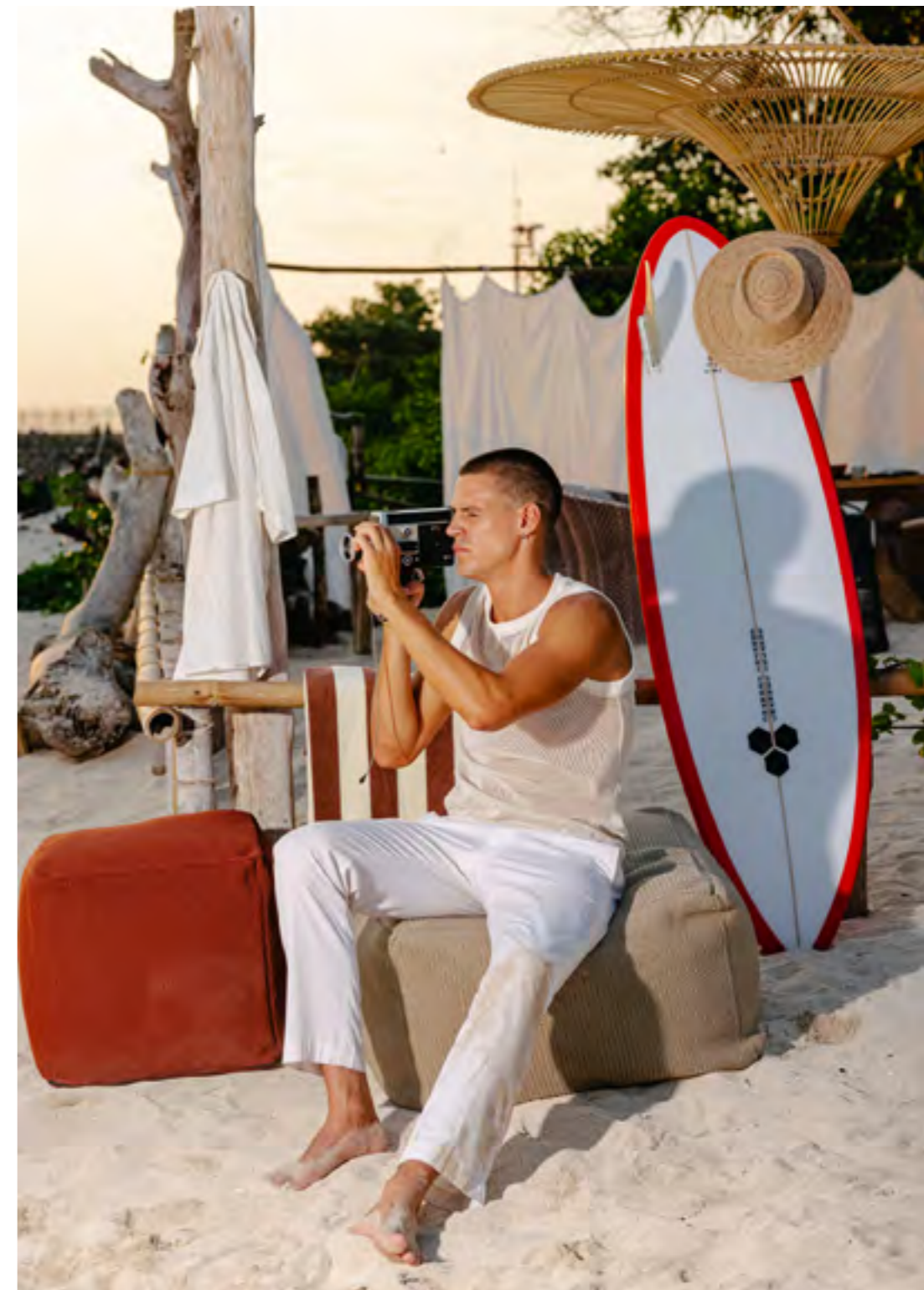


Sirio

Just like Sirius brightens the night sky, the collection of lamps named after it brings light into the darkest places.



Its frame is in aluminium to guarantee a stable but lightweight structure while the spoke-shaped hanger of each lamp is made of a material that simulates the texture of rattan.





Hanging Lamp

Small

Powder-coated aluminium frame, synthetic rattan
ø129 / H44,5 cm



N215N1A
Black

Small

Powder-coated aluminium frame, synthetic rattan
ø129 / H44,5 cm



N215N1B
Natural

Medium

Powder-coated aluminium frame, synthetic rattan
ø187 / H44,5 cm



N215N2A
Black

Medium

Powder-coated aluminium frame, synthetic rattan
ø187 / H44,5 cm



N215N2B
Natural

Large

Powder-coated aluminium frame, synthetic rattan
ø223 / H44,5 cm



N215N3A
Black

Large

Powder-coated aluminium frame, synthetic rattan
ø223 / H44,5 cm



N215N3B
Natural

Sofia

Embodying the epitome of elegance, with a design that blends sophistication and simplicity, Sofia offers both armed and armless variations and is an absolute delight for individuals who appreciate a refined and understated aesthetic.





Dining Armchair

4,8 mm hyacinth twisted weaving
W55 / D57 / H79 cm



N656N1
Black, Green

Dining Chair

4,8 mm hyacinth twisted weaving
W58 / D57 / H79/45 cm



N656N2
Black, Green



Stella



The common denominator of Stella – a collection of coffee tables and a chair that play with this geometric shape – is the circle. The coffee tables differ in terms of the size of their top in natural marble on a recycled teak base.



Designed by
Oriol Llahona

The chair features a really unusual back woven into an irregular pattern.





Coffee Table

Recycled teak, iron legs, marble top
W100 / D100 / H33 cm



JF0033
Natural

Recycled teak, iron legs, marble top
W60 / D60 / H43 cm



JF0034
Natural

Recycled teak, iron legs, marble top
W40 / D30 / H54 cm



JF0035
Natural

Chair

Powder-coated aluminium frame, synthetic rattan
W62 / D90 / H98 cm
SH36,5 cm



N908N1
Black



N908C3
White

Stylo

Designed by
Carlo Basso





A collection of classical coffee tables with a round top and three legs.

The versions differ in terms of their size and the combination of materials used. The top is available in natural marble or teak. The base can be in aluminium or teak.



Coffee Table

Aluminium legs, marble top
W100 / D100 / H36,5 cm



JLAL5BLBK100
Black Aluminium, Black Marble



JLAL5TRWH100
White Aluminium, Travertine
Marble



JLAL5GRBK100
Black Aluminium, Grey Marble



Aluminium legs, teak top
W100 / D100 / H36,5 cm

JLAL5TEWH100
White Aluminium, Natural Teak

Aluminium legs, marble top
W80 / D80 / H36,5 cm



JLAL6BLBK80
Black Aluminium, Black Marble



JLAL6TRWH80
White Aluminium, Travertine
Marble



JLAL6KABK80
Black Aluminium, Carrara
Marble



Aluminium legs, teak top
W80 / D80 / H36,5 cm

JLAL6TEWH80
White Aluminium, Natural Teak

Aluminium legs, marble top
W50 / D50 / H41,5 cm



JLAL7BLBK50
Black Aluminium, Black Marble



JLAL7TRBK50
Black Aluminium, Grey Marble



JLTE8KANA40
White Aluminium, Carrara
Marble



Teak legs, marble top
W50 / D50 / H41,5 cm

JLTE7KANA50
Natural Teak, Carrara Marble

Aluminium legs, marble top
W40 / D40 / H41,5 cm



JLAL8BLBK40
Black Aluminium, Black Marble



JLAL8TRBK40
Black Aluminium, Grey Marble



JLAL8KAWH40
White Aluminium, Travertine
Marble



Teak legs, marble top
W40 / D40 / H41,5 cm

JLTE8KANA40
Natural Teak, Carrara Marble



Tappo

This champagne cork-shaped stool is inspired by festive moments and celebrations. It is made from solid teak wood with an embellished surface finished in black.





Stool

Teak
ø38 / H45 cm



TJM065
Black

The

Art

of

A symphony of swings and hanging chairs, each bearing its unique flair, colors, and materials.

Swingin'





An expression of individuality and creative freedom, mesmerizing curves and intricate designs intertwine, The Art of Swingin' breathes life into spaces, transforming them into sanctuaries of serenity and bliss.







Chicago Hanging Chair

Powder-coated aluminium frame with Manao textured knots, natural coloured weaving
W90 / D73 / H125 cm



N349N1
Rattan

Powder-coated aluminium frame, resin bindings
W90 / D73 / H125 cm



N394N2
Dove



N394N2
Kubu Grey

Danny Hanging Chair

Powder-coated aluminium frame, 7 mm EU twisted rope weaving
W63 / D65 / H42 cm



N398N1
Raffia

Powder-coated aluminium frame, 7 mm resin twisted rope weaving
W63 / D65 / H42 cm



N398N2
Black

Manhattan Hanging Chair

Powder-coated aluminium frame, resin bindings
W84 / D56 / H127 cm



N396N1
Dove



N396N1
Kubu Grey



Titan



This table is solid and sculptural, conveying remarkable visual power. Titan is made of recycled teak wood, a material that sets off generous volumes. The chunky legs enhance the square corners of the top.

Designed by
Carlo Basso





Table

Natural recycled teak
W300 / D110 / H77 cm



JF025
Natural



Tolimán

Perfect to create the magical atmosphere of a night in the desert, Tolimán lanterns are made of twisted synthetic fibres in an open weave pattern that lets the light through.



The lanterns are available in three different sizes and come with an aluminium frame.



Lantern

L
Powder-coated aluminium frame, synthetic rattan weaving
ø34 / H60,5 cm



N910N1A
Natural

N910N1A
Black

M
Powder-coated aluminium frame, synthetic rattan weaving
ø29,5 / H51,5 cm



N910N1B
Natural

N910N1B
Black

S
Powder-coated aluminium frame, synthetic rattan weaving
ø31 / H41,4 cm



N910N1C
Natural

N910N1C
Black



Tondo

This large and inviting daybed coaxes you into fully enjoying relaxing moments.



The beach umbrella providing shade in the sunlight and the practical tray make it even more comfortable.





A teak base contributes to adding solidity to the seat while the back is enhanced by its weave.

Daybed

Powder-coated aluminium frame, Leles twisted weaving
ø221 / S209 / H40/77,4/149/169 cm



N870N1
Black



The joy of convivial moments is represented by this refined collection of outdoor chairs and barstools.



Tosca





The synthetic fibre weave that wraps around the seat and back is the key feature of this collection available in various colours.

Dining Chair

Powder-coated aluminium frame, synthetic peel weaving
W50 / D65 / H88 cm



IW004N1
Black-Honey



IW004N2
Black-Honey

Bar Stool

Powder-coated aluminium frame, synthetic peel weaving
W51 / D57 / H117 cm



IW005N1
Black-Honey



IW005N2
Black-Honey



Tropea

Tropea is a marvellously crafted ensemble of sofas and lounge chairs that exudes a passionate blend of elegance and cosiness. The lounge chair proudly showcases an ardent intertwined texture.





3-Seater Sofa

Aluminium frame, 14/18 7 mm premium synthetic twisted rope, synthetic Talu fabric
W219 / D82 / H74 cm
SH32 cm



N720N2
Black-Kubu Grey





The Ubud coffee tables are a perfect way to complete any arrangement with style.

Ubud









Round Table

Natural recycled teak (5 cm top, no gap)
W250 / D110 / H75cm



JF0002
Natural



JF0002
Black

Rectangular Table

Recycled teak
W240 / D110 / H75 cm



JF0015
Natural



JF0015
Black

Round Table

Mozaic Carvin
Recycled teak, Carvin mozaic finish
ø100 / H35 cm



JF0004A
Black

Black Charcoal
Recycled teak
ø100 / H35 cm



JF0004B
Black

Stripe Brush
Recycled teak, stripe brushed finish
ø100 / H35 cm



JF0004C
Black

Deep Wash
Recycled teak, deep wash finish
ø100 / H35 cm



JF0004D
Washed Brown

Soft Wash
Recycled teak, soft wash finish
ø100 / H35 cm



JF0004E
Black

Marble Top
Recycled teak legs, striped marble top
ø100 / H35 cm



JF0004M
Natural, Grey

Marble Top
Recycled teak legs, striped
marble top
ø75 / H40 cm



JF0005M
Natural, Carrara

Teak Top
Recycled teak
ø45 / H45 cm



JF0006
Natural

Marble Top
Recycled teak legs, striped
marble top
ø45 / H45 cm



JF0006M
Natural, Grey

Round Table

Mozaic Carvin
Recycled teak, Carvin mozaic finish
ø65 / H42 cm



JF0007A
Black

Black Charcoal
Recycled teak
ø65 / H42 cm



JF0007B
Charcoal

Stripe Brush
Recycled teak, stripe brushed finish
ø65 / H42 cm



JF0007C
Black

Deep Wash
Recycled teak, deep wash finish
ø65 / H42 cm



JF0007D
Brown Wash

Soft Wash
Recycled teak, soft wash finish
ø65 / H42 cm



JF0007E
Black

Stripe Brush
Natural recycled teak (3 cm top, box)
ø65 / H42 cm



JF0007F
Natural

Valentina





A comfortable armchair made from strands of twisted rope. These create a diamond-shaped pattern that is intertwined in a unique way to add a touch of refined comfort to the seat.

Dining Armchair

Powder-coated aluminium frame, synthetic rattan twisted rope weaving
W66 / D64 / H88,5 cm
SH45,5 cm



N445N1
Black, Euro Ash





Viareggio



Inspired by one of the most famous Italian beach locations, Viareggio is an outburst of vitality.





Stools and benches feature a teak frame and a seat made of geometric figures arranged in colourful patterns. The same colours and shapes are picked up by the rugs, the poufs and the crocheted baskets, designed to fully and harmoniously furnish any outdoor space.



Stool

Teak, cotton weaving
W40 / D40 / H45 cm



W2023004A



W2023004C



W2023004E



W2023004G



W2023004I



W2023004M

Teak, sunproof weaving
W40 / D40 / H45 cm



W2023004B



W2023004D



W2023004F



W2023004H



W2023004L



W2023004N

Bench

Teak, cotton weaving
W120 / D40 / H45 cm



W2023005A



W2023006A



W2023005C

Teak, sunproof weaving
W120 / D40 / H45 cm



W2023005B



W2023005D



W2023006B

Bench

Teak, cotton weaving
W90 / D40 / H45 cm



W2023006C

Teak, sunproof weaving
W90 / D40 / H45 cm



W2023006D



W2023006C

Teak, cotton weaving with two sizes
W90 / D40 / H45 cm



W2023006D

Teak, cotton weaving with two sizes
W60 / D40 / H45 cm



W2023006A

Teak, sunproof weaving
W60 / D40 / H45 cm



W2023006B

Pouf

Cube
Nylon
W42 / D42 / H40 cm



WTWPPF10NYAY
Army



WTWPPF10NYRE
Red



WTWPPF10NYTR
Terracotta



WTWPPF10NYTA
Taupe

Prisma
Nylon
W60 / D60 / H40 cm



WTWPPF11NYAY
Army



WTWPPF11NYTR
Terracotta



WTWPPF11NYRE
Red

Round
Nylon
W60 / D60 / H40 cm



WTWPPF12NYTA
Army

Round Line
Nylon
W60 / D60 / H40 cm



WTWPPF13NYGR
Dark Grey

Cylindric
Nylon
W50 / D50 / H45 cm



WTWPPF15NYDB
Dark Brown

Cylindric Round
Cotton
W50 / D50 / H45 cm



WTWPPF16COGR
Light Grey

Round Vortex
Rope
W60 / D60 / H40 cm



WTWPPF14OOMI
Mint



WTWPPF14OOMI
Mint



WTWPPF14OOMI
Mint



WTWPPF14OOMI
Mint

Vienna



Vienna is a tribute to the weaving technique, interpreted here in a vast range of designs and colours.









The collection includes chairs, lounge chairs, modules, sun loungers, stools and tables to customise your outdoor space.



504

cbdesign



Catalogue 2024

505









512

cbdesign



513

Catalogue 2024







Dining Armchair

Teak, weaving
 W62 / D60 / H84/61 cm
 SH46 cm



TJ 309
Black



TJ 309BC
Barcode



TJ 309F1
Diamond B&W



TJ 309F1B
Diamond Blue



TJ 309F12
Colombia



TJ 309F13
Mu Mu



TJ 309F15
Boho Chevron Black



TJ 309F19B
British 2



TJ 309F2
B&W Flower



TJ 309F5
Blue Big Diamond



TJ 309F7
White Arrow



TJ 309F7R
White Arrow Reverse



TJ 309F20
Moroko



TJ 309F20B
Moroko 2



TJ 309F21
Losanga



TJ 309F26
Caramel



TJ 309F9B
Batik Labyrinth Yellow



TJ 309F9B
Batik Labyrinth Black



TJ 309F10
Boho Chevron Yellow



TJ 309F10B
Boho Chevron Yellow Big



TJ 309F27
Farfalla Dark



TJ 309F27B
Farfalla Light



TJ 309F28
Losanga 2



TJ 309F33
Tribal Green

Dining Armchair

Teak, weaving
W62 / D60 / H84/61 cm
SH46 cm



TJ 309F35
Patterned Plaid Black



TJ 309F36
Patterned Plaid



TJ 309F50
Puerto Rico



TJ 309F51
4th July



TJ 309F52
Burberry 4



TJ 309F52B
Burberry 5



TJ 309F53
Pantheon Orange



TJ 309F54
Sunset



TJ 309F54B
Sunset 2



TJ 309F55
Metro 1



TJ 309F55B
Metro 2



TJ 309F55C
Metro 3

Modular Sofa

Right
Teak, synthetic rattan weaving
W176 / D98 / H20/60 cm



TJ 384C
Modular Right



TJ 384A
Barcode Modular Right



TJ 387C
Modular Center



TJ 387A
Barcode Modular Center

Left
Teak, synthetic
W176 / D98 / H20/60 cm



TJ 385C
Modular Left



TJ 385A
Barcode Modular Left



TJ 388C
Modular Corner



TJ 388A
Barcode Modular Corner

Corner
Teak, synthetic
W98 / D98 / H20 cm

Center Double
Teak, synthetic
W156 / D98 / H20/60 cm



TJ 386A
Barcode Modular
Center Double

Stool/Coffee Table
Teak, synthetic
W78 / D78 / H20 cm



TJ 389A

Sunbed

Teak, synthetic weaving
W200 / D65 / H32 cm



TJ 306

TJ 306F1
Burberry Green

TJ 306F2
Burberry Yellow

TJ 306F3
Burberry Tiger



TJ 306F4
Burberry Malibu

TJ 306F5
Ivory

Relax Chair



TJ 342E
Natural

Teak, rope weaving
W64,5 / D83 / H70 cm
SH40 cm

Relax Chair

Powder-coated aluminium, resin stripes
W64,5 / D83 / H70 cm
SH40 cm



TJN342F43
White

TJN342F43
White

Powder-coated aluminium,
6 mm resin
W64,5 / D83 / H70 cm
SH40 cm



TJN342F32B
Diamond Black

Teak
W64,5 / D83 / H70 cm
SH40 cm



TJ 342A
Natural

Powder-coated aluminium, twisted resin rope
W64,5 / D83 / H70 cm
SH40 cm



TJN342F43
Caraibi

TJN342F44
Nippon

Teak, synthetic Charita
weaving
W64 / D75 / H68 cm



TJN342F24A
Natural, Euro Ash



TJ 342A
Natural

Teak, 5 mm synthetic Charita weaving
W64,5 / D83 / H70 cm
SH40 cm



TJ 342AB
Natural

Teak, synthetic open weaving
W64,5 / D83 / H70 cm
SH40 cm



TJ 342C
Natural



TJ 342C2
Natural, Sand

Relax Chair

Powder-coated aluminium, Leles twisted resin, Charita closed-frame weaving
 W64,5 / D83 / H70 cm
 SH40 cm



TJN342F24A
 Black



TJN342F24A
 Black, Blue



TJN342F24A
 Black, Brown Oak



TJN342F24A
 Black, Coral



TJN342F24A
 Black, Euro Ash



TJN342F24A
 Black, Off White



TJN342F24A
 Black, Orange

Teak, synthetic weaving
 W64,5 / D83 / H70 cm
 SH40 cm



TJ 342F1
 B&W Diamond



TJ 342F2
 B&W Flower



TJ 342F3
 Moka Cream



TJ 342F5
 Blue Big Diamond



TJ 342F7
 Red White Arrow



TJ 342F9
 Yellow Batik Labirint



TJ 342F10
 Boho Chevron Yellow



TJ 342F12
 Colombia



TJ 342F13
 Miu Miu



TJ 342F14
 Burberry 1



TJ 342F15
 Chevron Black



TJ 342F16
 Elika



TJ 342F17
 Cappuccino



TJ 342F18
 Black



TJ 342F19
 British



TJ 342F20
 Moroko



F342F20A
 Moroko Sky Dark



F342F20B
 Moroko Sky Light



TJ 342F21
 Losanga



TJ 342F22
 Burberry 2



TJ 342F23
 Burberry 3



TJ 342F24B
 Charita closed-frame rope
 weaving



TJ 342F26
 Caramel



TJ 342F27
 Farfalla



TJ 342F27C
 Farfalla Colors



TJ 342F28
 Losanga 2

Relax Chair



TJ 342F29
Tiger



TJ 342F30
Black-White



TJ 342F31
White-Black



TJ 342F32S
Sand



TJ 342F33
Tribal Green



TJ 342F34
Neutral Chevron Rope Twist



TJ 342F35
Patterned Plaid Black



TJ 342F36
Patterned Plaid



TJ 342F37
Patterned Plaid 2



TJ 342F38
White



TJ 342F39
Borneo



TJ 342F40
Borneo Reverse



TJ 342F41
Kubu Grey



TJ 342F42
Macrame



TJ 342F43
Line



TJ 342F56
Green Orizont



TJ 342F57
Carioca

Relax Armchair

Teak, synthetic Charita weaving
W64,5 / D83 / H70 cm
SH40 cm



TJ 343A
Natural



TJ 343B18
Natural, Black



TJ 343B30
Natural, Black



TJ 343C
Natural



TJ 343E
Natural



TJ 343G
Natural

Relax Stool

Teak, 5 mm synthetic
Charita weaving
W65 / D40 / H40 cm



TJ 344AB
Black

Sofa

Teak, synthetic weaving
W153 / D69 / H83 cm



TJ 302
Black

Coffee Table

Teak
W100 / D55 / H35 cm



TJ 304
Natural

Side Table

Teak
W50 / D55 / H35 cm



TJ 305
Natural



Village

Village presents a series of stools and side tables that explore the sculptural quality of various Indonesian wood.



Batik

A collection of stools in solid wood with primordial lines inspired by Indonesian tradition. These stools are made of teak and rain tree wood with a natural or stained finish. The inlaid stool with a Batik-style pattern – a technique used to colour fabrics or other materials – is particularly original.

Birillo

Curvy, sinuous lines catch the eye, coaxing it into following the contours of this collection of teak wood side tables. A rounded, solid base is topped by a slim surface that adds visual lightness to the design. The Birillo side tables are available in two sizes.





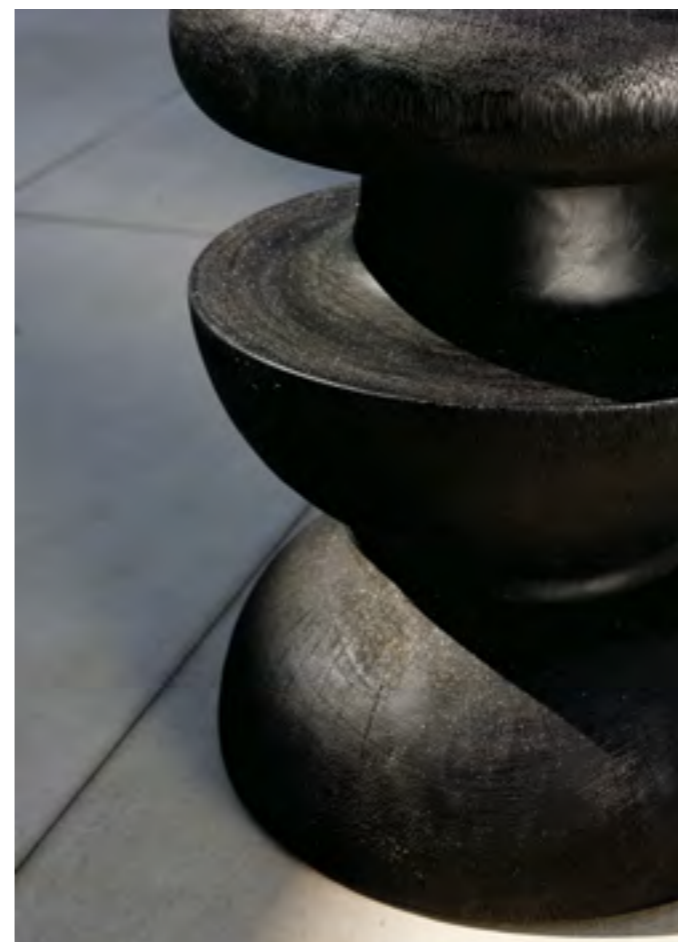


Breake

Primordial lines and natural materials come together in the Breake collection made up of carved teak and suar wood stools.



Their forms – ranging from angled to rounded – are inspired by various geometric shapes stacked one on top of the other to create elements similar to small totem poles.







Rustic

Rustic presents a stunning series of side tables, ingeniously crafted from recycled teak wood, embodying both sustainability and style. The superb thickness of the staves not only enhances the beauty of each piece but also contributes to its remarkable strength. Each side table within this collection captures the essence of rustic charm while simultaneously providing a durable and long-lasting addition to any space.



Batik Stool

Wood
ø40 / H45 cm



TJ 555
Grey

Birillo Side Table

L
Teak
W45 / D45 / H40 cm



TJ 535A
Natural

M
Teak
W39 / D39 / H35 cm



TJ 535B
Natural

Breake Stool

Stool 1
Recycled teak
W40 / D40 / H45 cm



PO165
Black

Stool 2
Recycled teak
W35 / D35 / H45 cm



PO166
Black

Stool 3
Recycled teak
W35 / D35 / H45 cm



PO167
Black

Stool 4
Recycled teak
W35 / D35 / H45 cm



PO168
Suar

Stool 5
Recycled teak
W35 / D35 / H45 cm



PO169
Suar

Rustic Side Table

L
Teak, iron powder-coated
W32 / D32 / H83 cm



W22027
Black, Natural

M
Teak, iron powder-coated
W32 / D32 / H63 cm



W22028
Black, Natural

S
Teak, iron powder-coated
W32 / D32 / H43 cm



W22029
Black, Natural





A minimalist and elegant sun lounger
in black finished teak wood.

Vintage

Vintage is embellished by an open-weave pattern achieved using synthetic, sunproof rope.



Single Bed

Teak, sunproof weaving
W112 / D222 / H48 cm



W23061
Ecru/Charcoal



Vovo



The primordial shape of the egg is made over to produce a lounge chair.

Vovo is a wraparound chair that charms you into relaxation. It features an aluminium frame and the characteristic weave obtained using synthetic cord.



Lounge Chair

Powder-coated aluminium frame, synthetic core
rattan weaving
W88 / D78 / H88 cm



IW015N1
Black

Westly is a dining table in recycled teak wood with a brushed finish.

Westly







Its rectangular top sits on a solid base with slightly slanting legs.

Table

Recycled teak with natural brushing
(4 cm framed top, 1,2 cm middle slat)
W240 / D100 / H75 cm



PO160
Natural



X





Dining Armchair

Teak, synthetic rattan weaving
W54 / D50 / H84 cm
SH44 cm



TJ 532
Euro Ash

X is the elegant director's chair that brings to mind the world of film-making because of the iconic shape of the front and rear stretcher bars between its legs. It is made out of teak wood paired with synthetic fibres woven into different patterns.





Y

Y is a modern-style dining table with a rectangular top made from teak wood.



Table

Powder-coated alloy legs (5×5 cm), new teak (4 cm full open slat top, live edge), box pack W240 / D100 / H77 cm



PO001M
Black, Natural

The legs are arranged in an upside down Y shape and are in black-coloured iron.

Zagora



A collection of soft furnishings with luxury details such as turned legs.





Together with lounge chairs and sofas, a daybed is available, designed to protect you from the sunlight and to create a shelter for those intimate moments.



The coffee table completes the collection.



576

cbdesign

Catalogue 2024



577

Daybed

Teak
W202 / D182 / H168 cm

3 pillows 80×80 cm
4 pillows 50×50 cm
2 bolsters ø18×120 cm



TJ 506
Rustic finished

Lounge Chair

Teak
W128 / D128 / H42 cm
SH55 / SA80 cm

2 pillows 80×80 cm
1 pillow 50×50 cm
2 bolsters ø18×100 cm



TJ500
Rustic finished

Sofa

Teak
W262 / D128 / H42 cm
SH55 / SA80 cm

3 pillows 80×80 cm
2 pillows 50×50 cm
2 bolsters ø18×100 cm



TJ501
Rustic finished

Coffee Table

Teak
W120 / D120 / H29 cm



TJ504
Rustic finished



ZOCO





Zoco features exotic charm in a collection that draws together various types of seats such as stools and benches.

Its frame is in teak wood with two lateral handles. The pattern that covers the seats is achieved using various, brightly-coloured materials.

Bench

Teak, cotton weaving
W120 / D41 / H45 cm



W2023001A

Teak, sunproof weaving
W120 / D41 / H45 cm



W2023001B

Stool

Teak, cotton weaving
W55 / D37 / H45/43 cm



W2023002A



W2023003A



W2023002B



W2023003B



Zoe

An elegant armchair in teak featuring slim, minimalist lines.



Dining Armchair

Teak, synthetic rattan weaving
W56 / D62 / H79 cm



TJ 453A
Natural

Its legs, back and armrests are in wood while its seat is made of synthetic cord with an open weave.



Photography

Indra Wiras
Denis Molinari
Lily Rose

Videography

Surya Wisnawa

Art direction and styling

Lily Rose

Styling, model, and reel production

Sabrina Dessi

Home furnishings and accessories

KREEA

Graphic design

Window Seat Studio

Copywriting

Adinda Yuwono

Printing

Harapan Prima

Printed in Jakarta, Indonesia

© cbdesign 2024

All rights reserved

Find out more about our collections at
cbdesignfurniture.com



cb cbdesign
Outdoor italiano

T +62 81 26084533 (Indonesia)
T +39 393 8896989 (Italy)

info@cbdesignfurniture.com
erlina.darmi@yahoo.com

cbdesignfurniture.com

CIREBON

JEPARA

SEMARANG

YOGYAKARTA

ITALY